



FORTE
MINERALS CORP.

CSE: CUAU | OTCQB: FOMNF | Frankfurt: 20A

Corporate Presentation

Exploring High-Quality Copper & Gold Assets in Peru



Forward Looking Statements

This presentation contains "forward looking statements" within the meaning of applicable securities legislation. These forward-looking statements are made as of the date of this presentation and the Company does not intend, and does not assume any obligation, to update these forward-looking statements, except as required by law.

Forward-looking statements may include, but are not limited to, statements with respect to the future price of metals, the estimation of mineral resources, the realization of mineral resource estimates, the timing and amount of estimated future production, capital expenditures, success of exploration activities, permitting time lines, requirements for additional capital, government regulation of mining operations, environmental risks, unanticipated reclamation expenses, title disputes or claims, limitations on insurance coverage, the completion of transactions and future listings and regulatory approvals. In certain cases, forward-looking statements can be identified by the use of words such as "plans", "expects" or "does not expect", "is expected", "budget", "scheduled", "estimates", "forecasts", "intends", "anticipates" or "does not anticipate", or "believes", or variations of such words and phrases or state that certain actions, events or results "may", "could", "would", "might" or "will be taken", "occur" or "be achieved".

In particular, this presentation contains forward-looking information pertaining to the following:

- The Company's exploration activities and programs and its plan and expectations for its mineral projects, as well as the timing and costs associated with same;
- the Company's plan to pursue exploration activities on its mineral projects; including statements of the Company's intent to develop those projects or put those projects into commercial production;
- statements relating to the business and future activities of, and developments related to the Company after the date of this presentation and thereafter;
- the Company's expected business objectives for the next twelve months.

In making the forward looking statements in this presentation, the Company has applied certain factors and assumptions that it believes are reasonable, including that there is no material deterioration in general business and economic conditions; that the supply and demand for, deliveries of, and the level and volatility of prices of the Company's primary metals and minerals develop as expected; that the Company receives regulatory and governmental approvals for its properties on a timely basis; that the Company is able to obtain financing for its properties on reasonable terms; that the Company is able to procure equipment and supplies in sufficient quantities and on a timely basis; that engineering and exploration timetables and capital costs for the Company's exploration plans are not incorrectly estimated or affected by unforeseen circumstances; that any environmental and other proceedings or disputes are satisfactorily resolved; and that the Company maintain its ongoing relations with its business partners.

However, forward-looking statements involve known and unknown risks, uncertainties and other factors which may cause the actual results, performance or achievements of the Company to be materially different from any future results, performance or achievements expressed or implied by the forward-looking statements. Such factors may include, among others, actual results of current exploration activities; actual results of reclamation activities; future metal prices; accidents, labor disputes and other risks of the mining industry; delays in obtaining governmental or regulatory approvals or financing or in the completion of exploration activities, as well as those factors discussed in Company's continuous disclosure filings. Although the Company has attempted to identify important factors that could cause actual actions, events or results to differ materially from those described in forward-looking statements, there may be other factors that cause actions, events or results not to be as anticipated, estimated or intended. There can be no assurance that forward-looking statements will prove to be accurate, as actual results and future events could differ materially from those anticipated in such statements. Accordingly, readers should not place undue reliance on forward-looking statements. The Company does not undertake to update any forward-looking statements, except in accordance with applicable securities laws.

Technical Content - Technical Content: The technical content of this presentation has been reviewed and approved by Richard Osmond, P.Geo., a Qualified Person pursuant to National Instrument 43-101



Business Strategy

Positioned for Growth in Peru's
Rich Mineral Terrain

Strategic Partnership:

Forte Minerals Corp. is a forward-looking junior exploration company that has formed a strategic partnership with GlobeTrotters Resources Perú S.A.C. combining local expertise and novel geological insights to uncover and develop prime copper (Cu) and gold (Au) prospects in Peru.

Resource Development:

With a vision firmly set on growth, the company is charting a path towards delineating significant Cu and Au resources. Our objective is to advance these assets from exploration to resource development stages, unlocking value and establishing a firm foundation for long-term growth.

Portfolio Development:

Our portfolio is a testament to our strategic foresight, featuring a selection of high-grade Cu and Au properties. It is the product of our unique exploration strategy that blends new knowledge from both established and emerging districts, utilizing distinctive targeting techniques and effective alteration identification processes to pinpoint underexplored, near-surface mineral deposits.

Community & Environment:

The Company is dedicated to responsible mining practices. We understand that our operations are as much about the people and the environment as they are about extracting minerals. Our approach is of community engagement, rigorous environmental stewardship, and a strong commitment to meeting and exceeding our societal responsibilities.



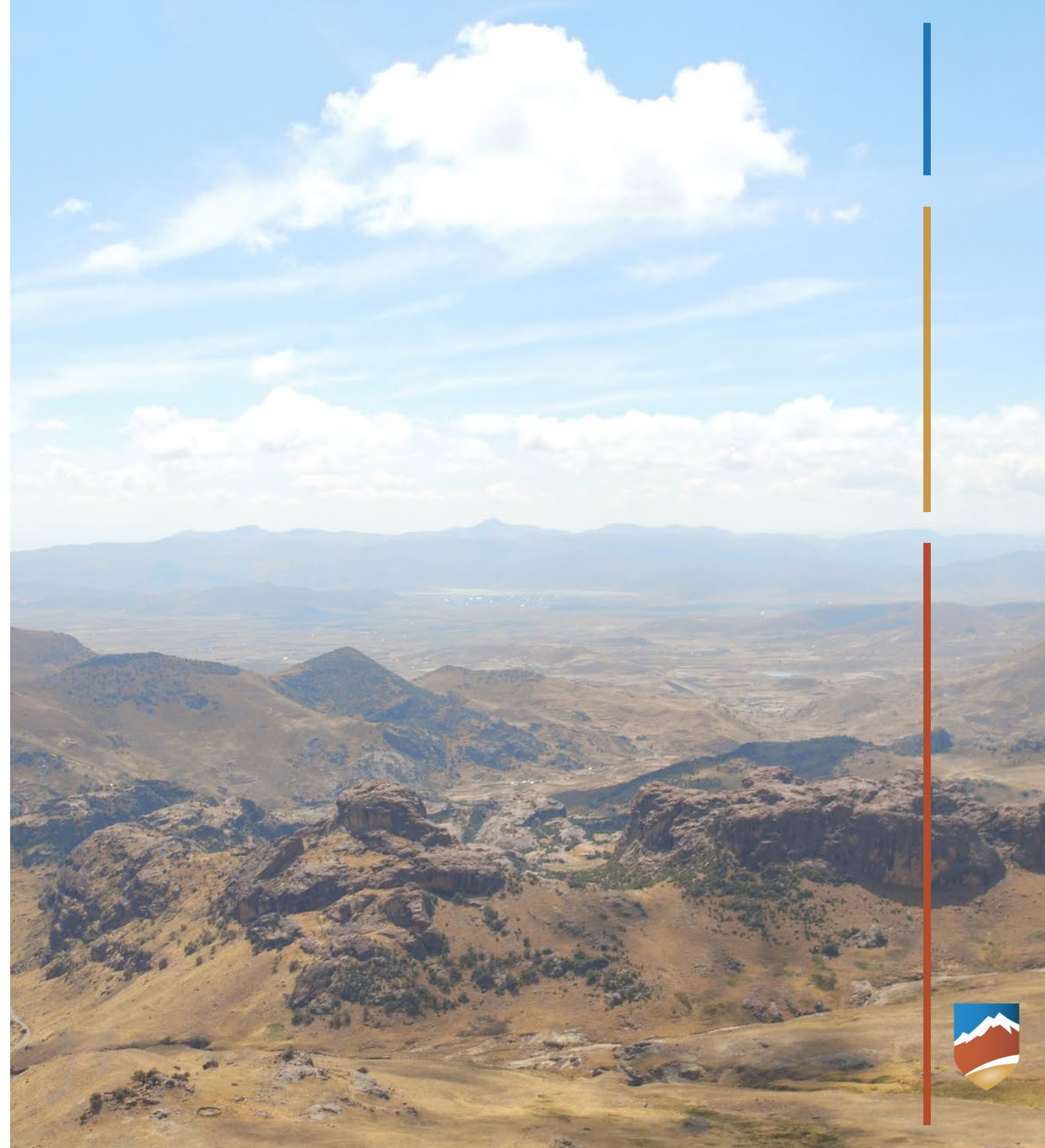
Peru's Untapped Mineral Potential

Unearthing Golden & Copper Riches

As the world's second-largest copper producer, Peru extracted 2.2 million metric tons of copper in 2022, showcasing its role in the global metals market.

Its also the ninth-largest gold producer worldwide, with 3.22 million ounces of gold mined in the last year.

Peru's potential remains significantly untapped.



Strategic Edge



Fusing profound industry knowledge with community and environmental integrity to advance Peru's mining potential.

————— **Premier Locations & Proximity:**

Situated in mineral-rich regions with ready access to infrastructure.

————— **Regulatory Savvy & Rich Data:**

Expert navigation of Peru's mining policies, enhanced by comprehensive historical data.

————— **Proven Reserves & Experienced Team:**

Close to established Cu-Au deposits, backed by a century of collective industry expertise.

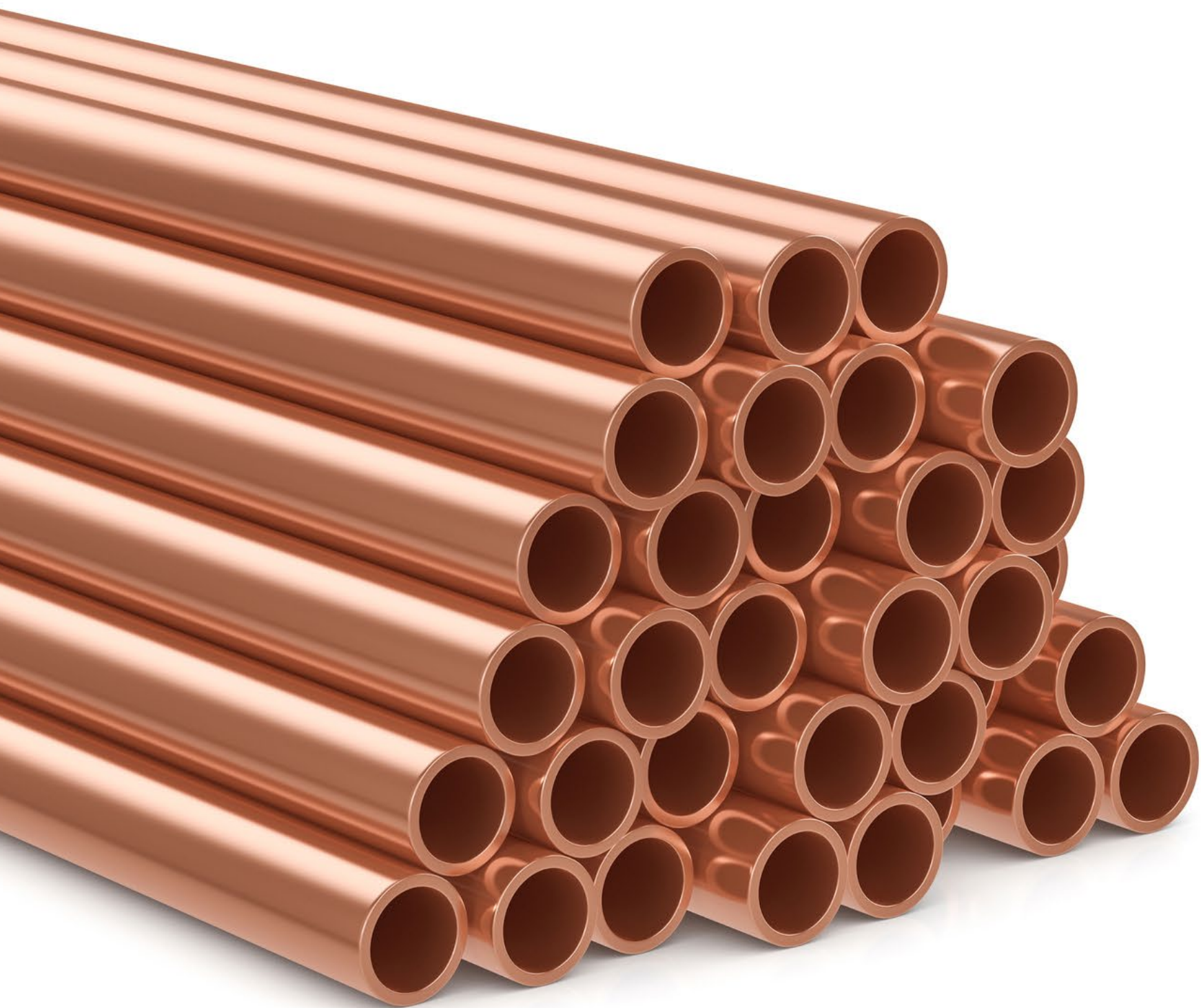
————— **Local Presence & Community Alliance:**

Our in-house team in Peru ensures seamless operations and community integration.

————— **Sustainable Practices:**

Deep-rooted commitment to environmental care and sustainable mining methods.





Copper, the critical metal of the future.

Upcoming Shortage

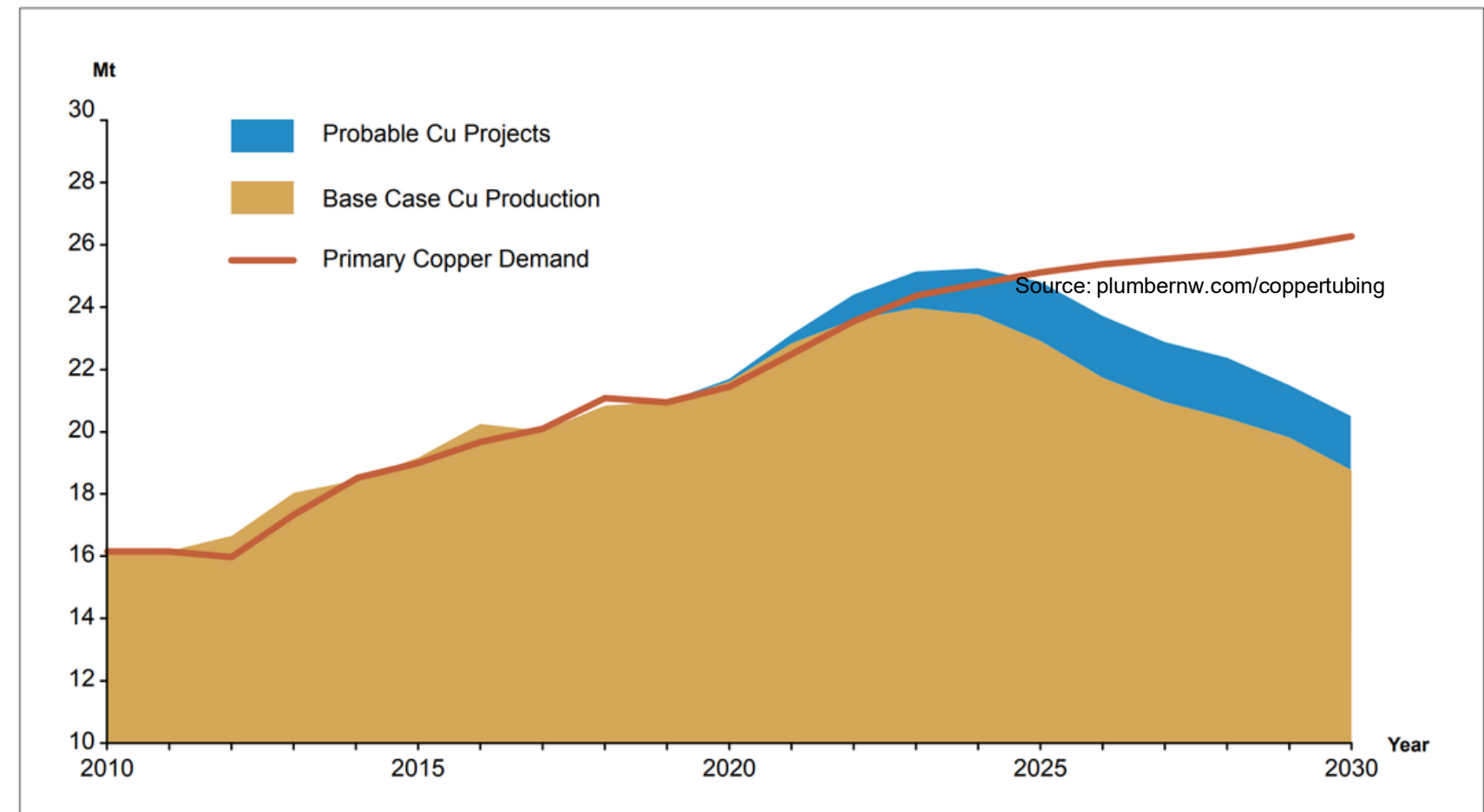
Current copper mines are seeing a drop in output and poorer ore quality, sharpening the imbalance between supply and demand. There's a pressing need for new mining projects, yet there's a noticeable lack in the pipeline.

Identifying and developing these scarce new sites is fraught with challenges, requiring thorough exploration, significant investments, and carefully balancing environmental and community concerns, with a timeline often exceeding ten years from exploration to production.



Business Case For Copper

- Declining discovery of both Cu & Au because:
 - Permitting load
 - Exploration must look deeper
 - Attention on brownfields. An easy, quick but finite solution to reserve replacement
- Result is increased worldwide demand for copper and gold.
- Large mineral systems that are accessible are highly desired
- Demand will outstrip primary production by 2025, driving the price for copper.
- Timeline is extremely favorable, and Forte remains well positioned to thrive from prevailing Copper prices.



Source: Wood Mackenzie - Global Copper Long Term Outlook Q1-2020 (March, 2020)



Board of Directors



The team is composed of dedicated and qualified professionals who have a combined 215 years of experience in exploration and mining in the Americas and a combined 60 years successfully managing public companies.



Patrick Elliott, MSc. MBA
President, CEO & Director
20+ Years in Mining Industry



Richard Osmond, P.Geo
Director
30+ Years in Mining Industry



Stephanie Ashton MA.
Independent Director
25+ Years in Mining Industry



Doug Turnbull, P.Geo., H.B.Sc.
Independent Director
40+ Years in Mining Industry



Richard Leveille, MSc. MBA
Independent Director
40+ Years in Mining Industry



Management



Patrick Elliott, MSc. MBA
President, CEO & Director
20+ Years in Mining Industry



Manuel Montoya, P. Geo
General Manager Peru
36+ Years in Mining Industry



Jasmine Lau
Chief Financial Officer
15+ Years in Accounting & Finance



Anna Dalairé
VP Corp Dev. & Corp Sec.
15+ Years Compliance &
Marketing

Advisors



Ricardo Labó, MSc.
Mineral Economist Advisor, Peru
20+ Years in Mining Industry



Peter Espig, MBA.
Financial Advisor
30+ Years in Financial Industry



Thomas Henricksen, PhD.
Geologist Sr. Advisor
35+ Years in Mining Industry



Mike Carter
Lead Energy Advisor
20+ Years in Mining & Energy



Capital Structure

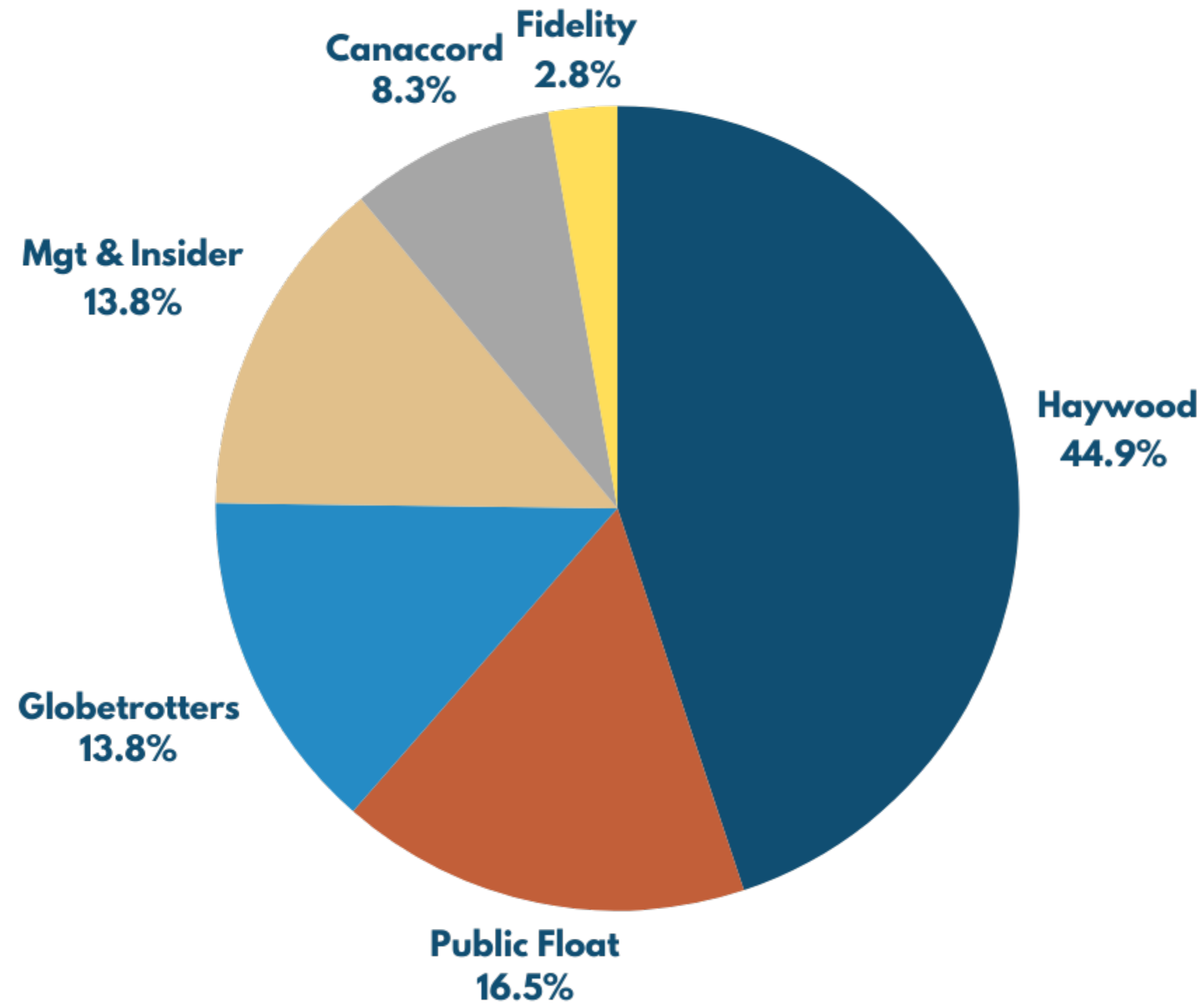
As of April 4, 2024 at \$0.25

Issued & Outstanding	36,774,419
IPO Warrants at \$0.50 Expire Jan 2025	9,633,332
Warrants at \$0.20 Expire July 2024	5,001,093
Options	3,675,000
Fully Diluted	55,083,844
Market Capitalization	\$9.1M

Total warrants 14,634,425

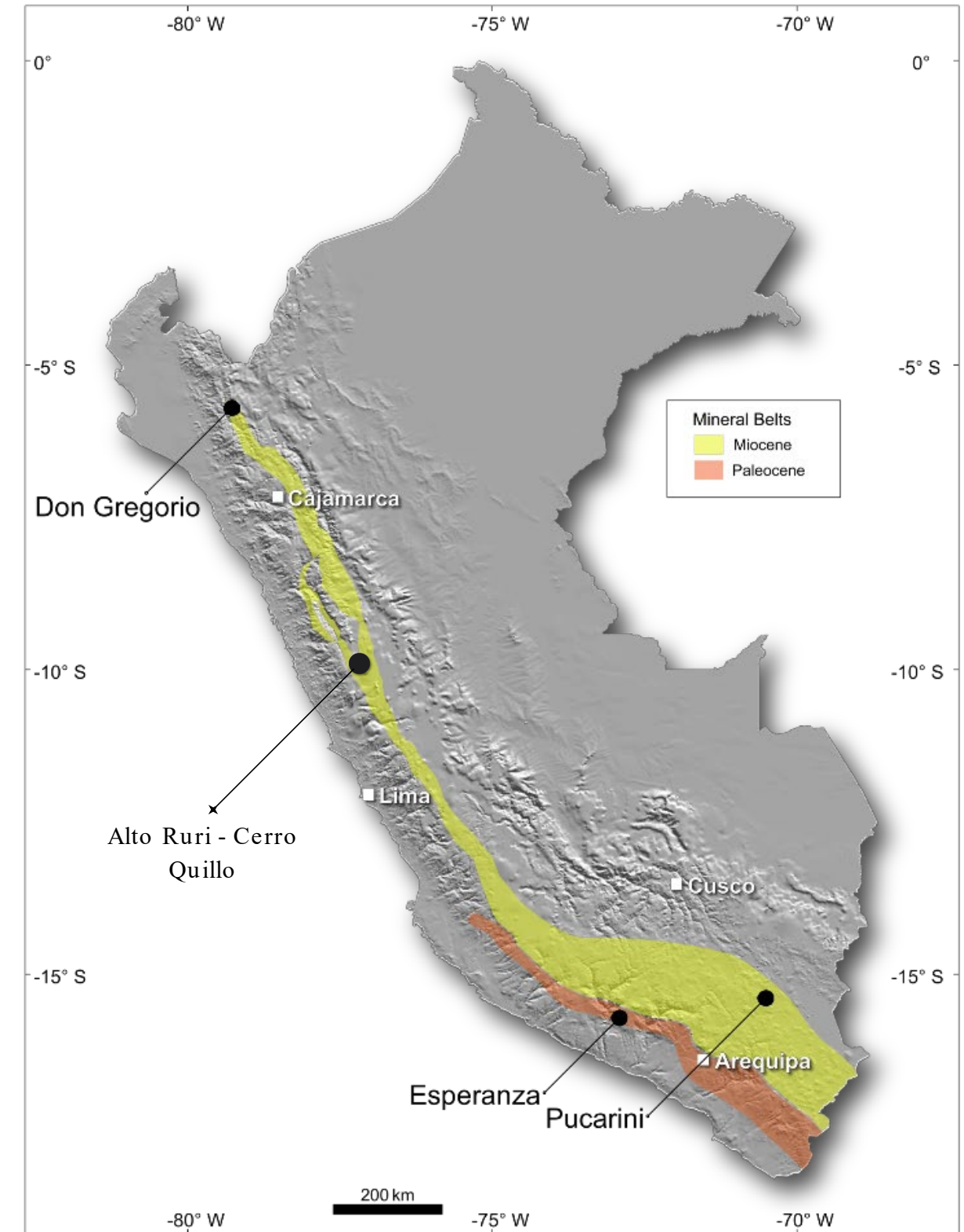


Shareholder Breakdown



High Quality Exploration Portfolio

Projects	Tenure
<p><u>Pucarini</u> Miocene high sulfidation epithermal Au target. Sept 2023 - DIA approval.</p>	1,000 ha
<p><u>Pucarini Regional</u> Identified 3 new discoveries of epithermal mineralization in Miocene Arc similar to Pucarini.</p>	6,100 ha
<p><u>Don Gregorio</u> Cu-Au Porphyry Project.</p>	900 ha
<p><u>Esperanza</u> Cu-Mo Porphyry Project. Dec 2023 - DIA Approval</p>	4,000 ha
<p>Alto Ruri Miocene high sulfidation epithermal Au project. Cerro Quillo Au-Cu-Mo Porphyry Project</p>	4,700 ha
<p><u>Total</u></p>	16,700 ha

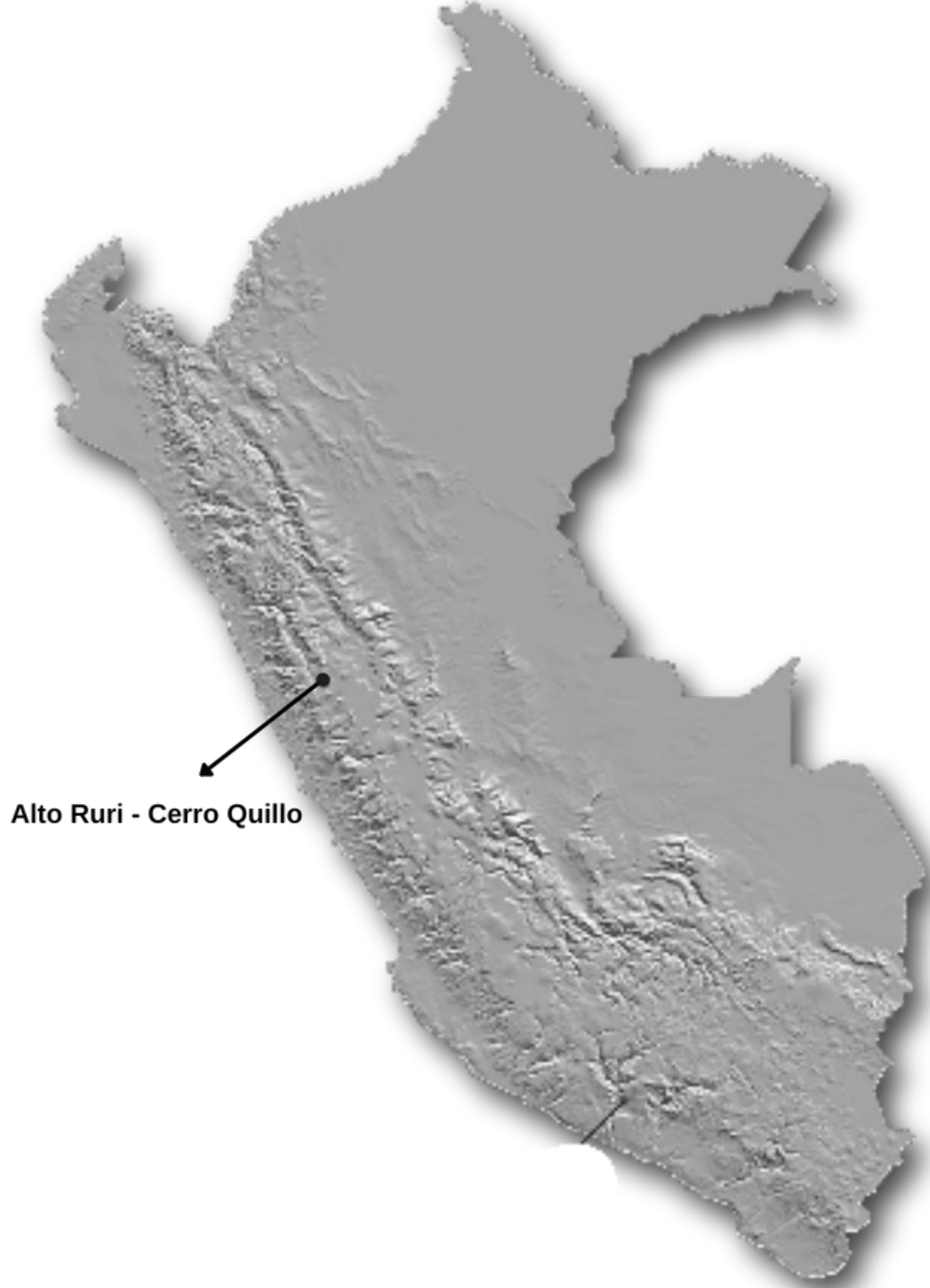


GlobeTrotters contributed Esperanza (Cu-Mo) and Pucarini (Au) in exchange for equity and a 1% NSR royalty on the both properties.



Alto Ruri

High Sulfidation
Gold

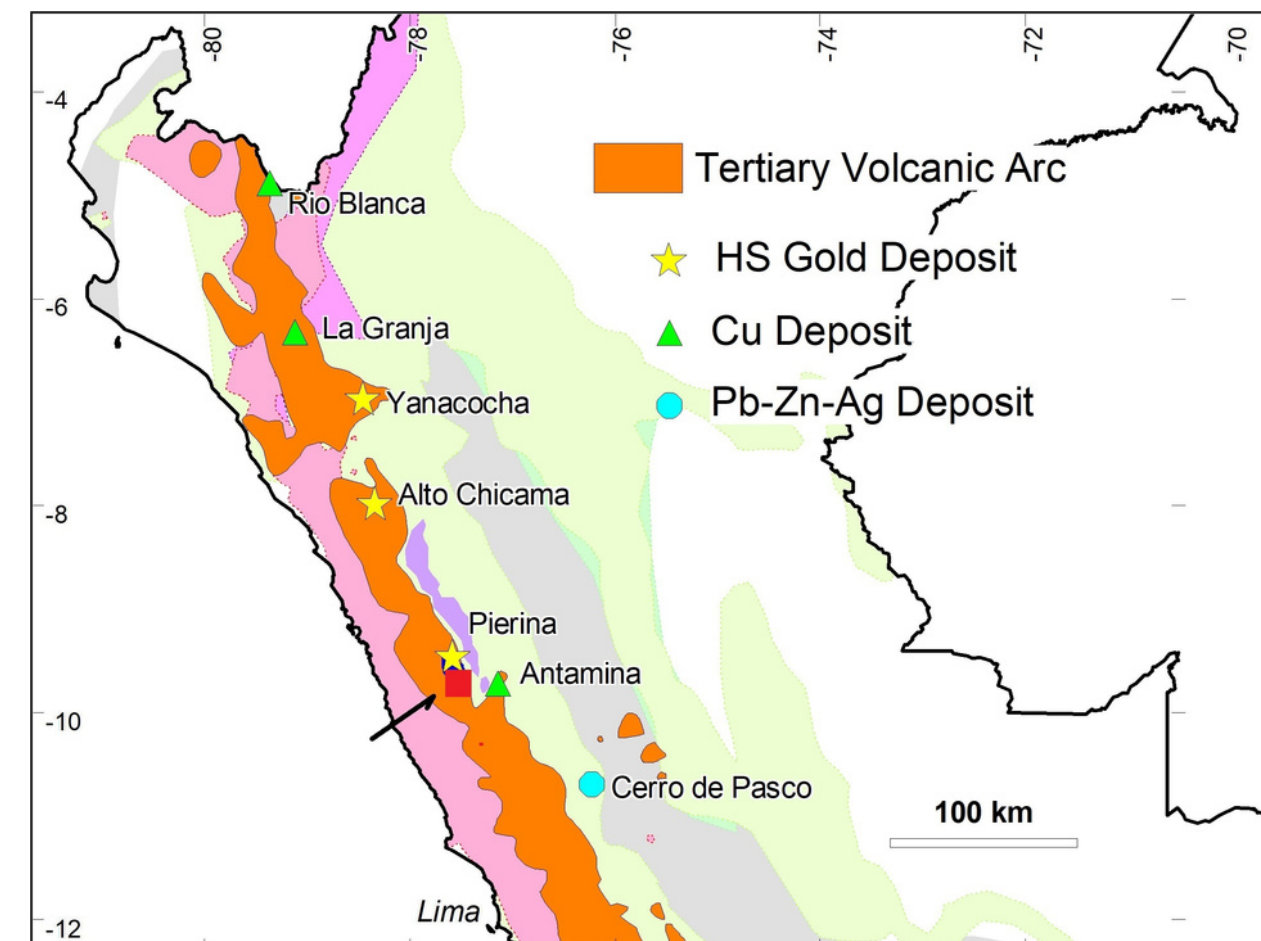
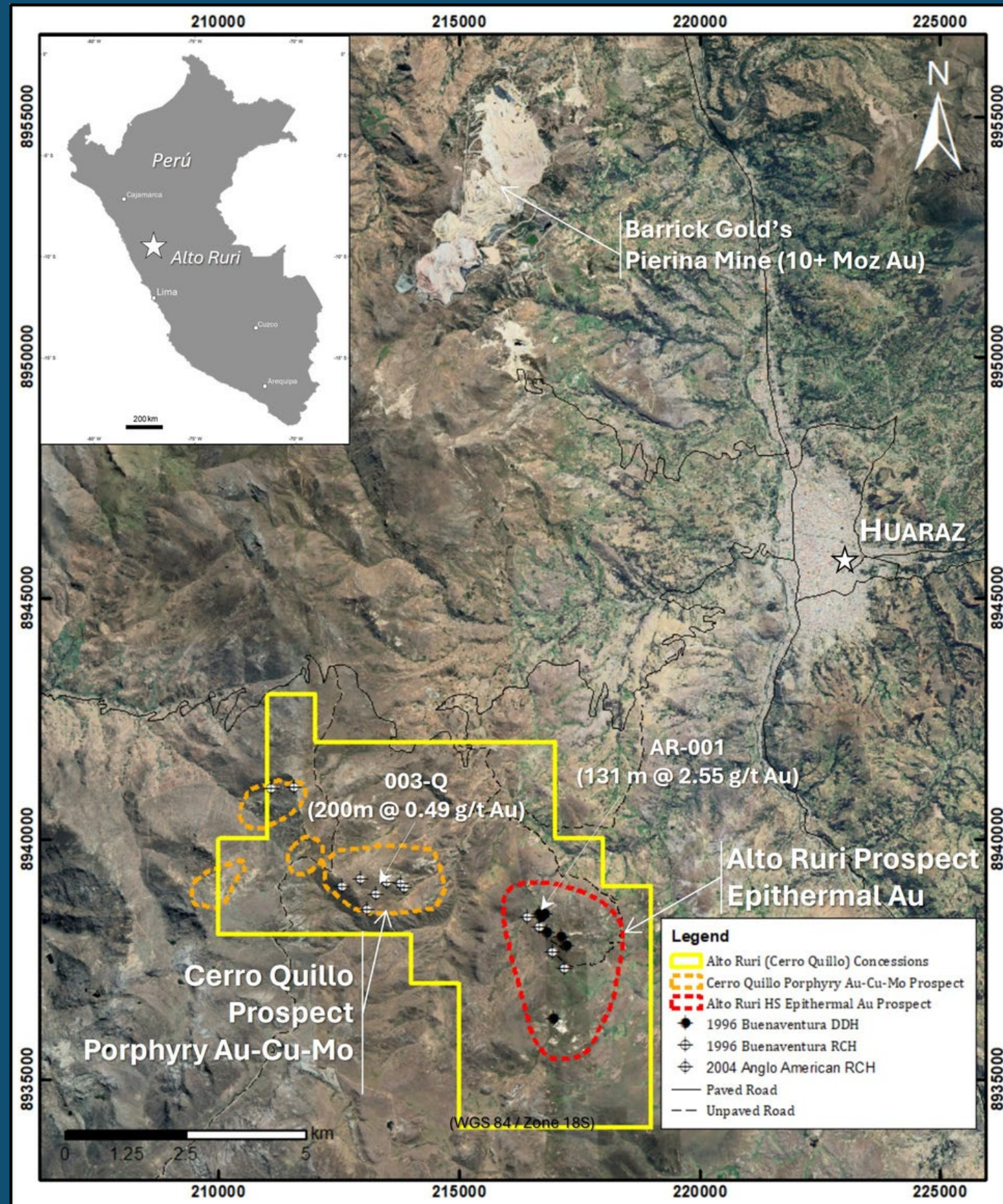


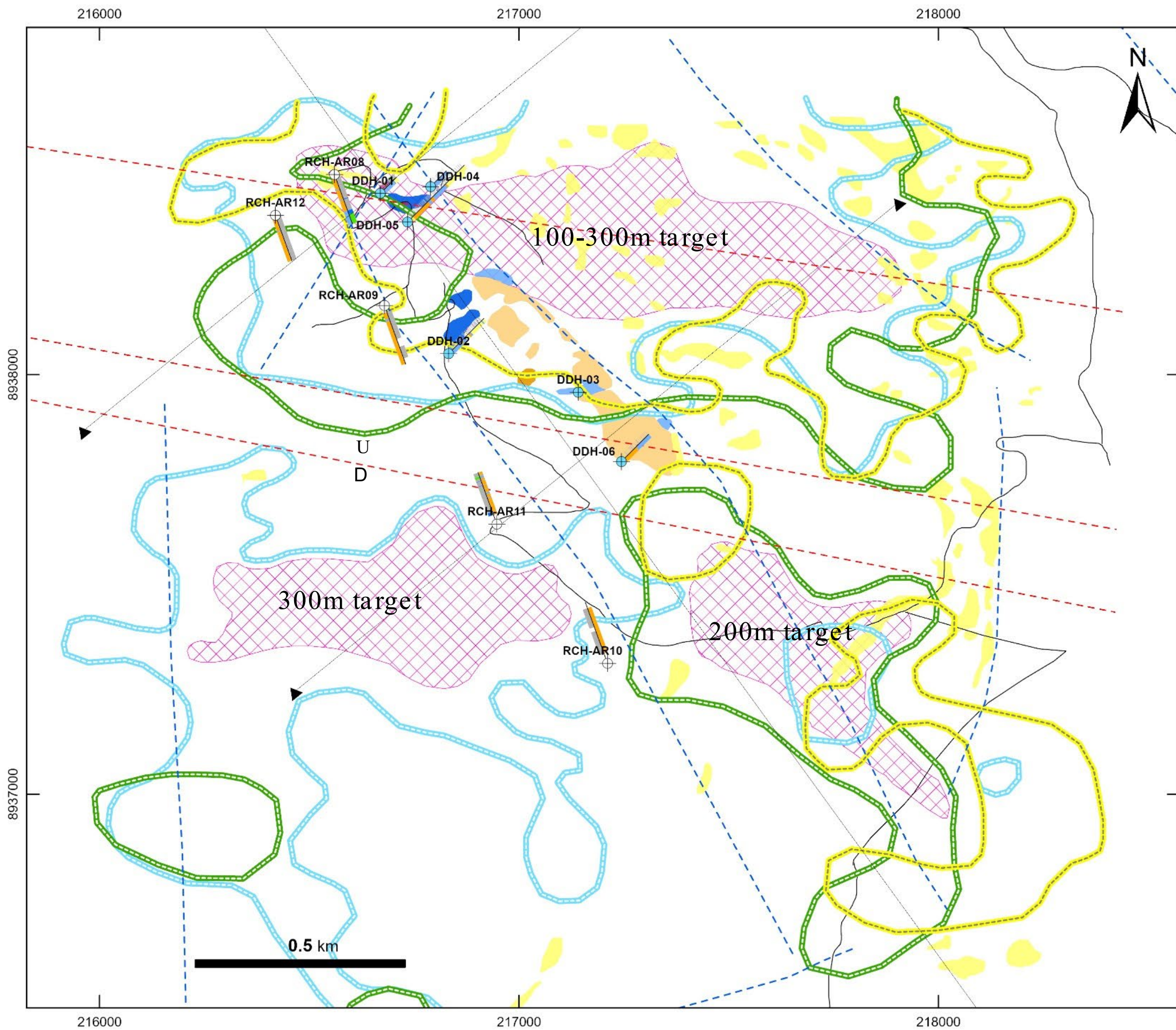
Summary

- 4700 ha - 15 km south of Barrick's Pierina Gold Mine.
- 100% ownership subject to a 1% NSR Royalty.
- Comprised of 2 prospects:
 - Alto Ruri – High Sulphidation Epithermal Au
 - Cerro Quillo – Porphyry Au-Cu-M

Alto Ruri – Drilled by Buenaventura 1997

- 12 shallow holes for a total of 2254.5 m.
- 001-97 returned best results of 131 m of 2.55 g/t Au.
- Including 54 m of 5.39 g/t Au.





Alto Ruri Plan View

CSAMT Resistivity Outline (-300m)

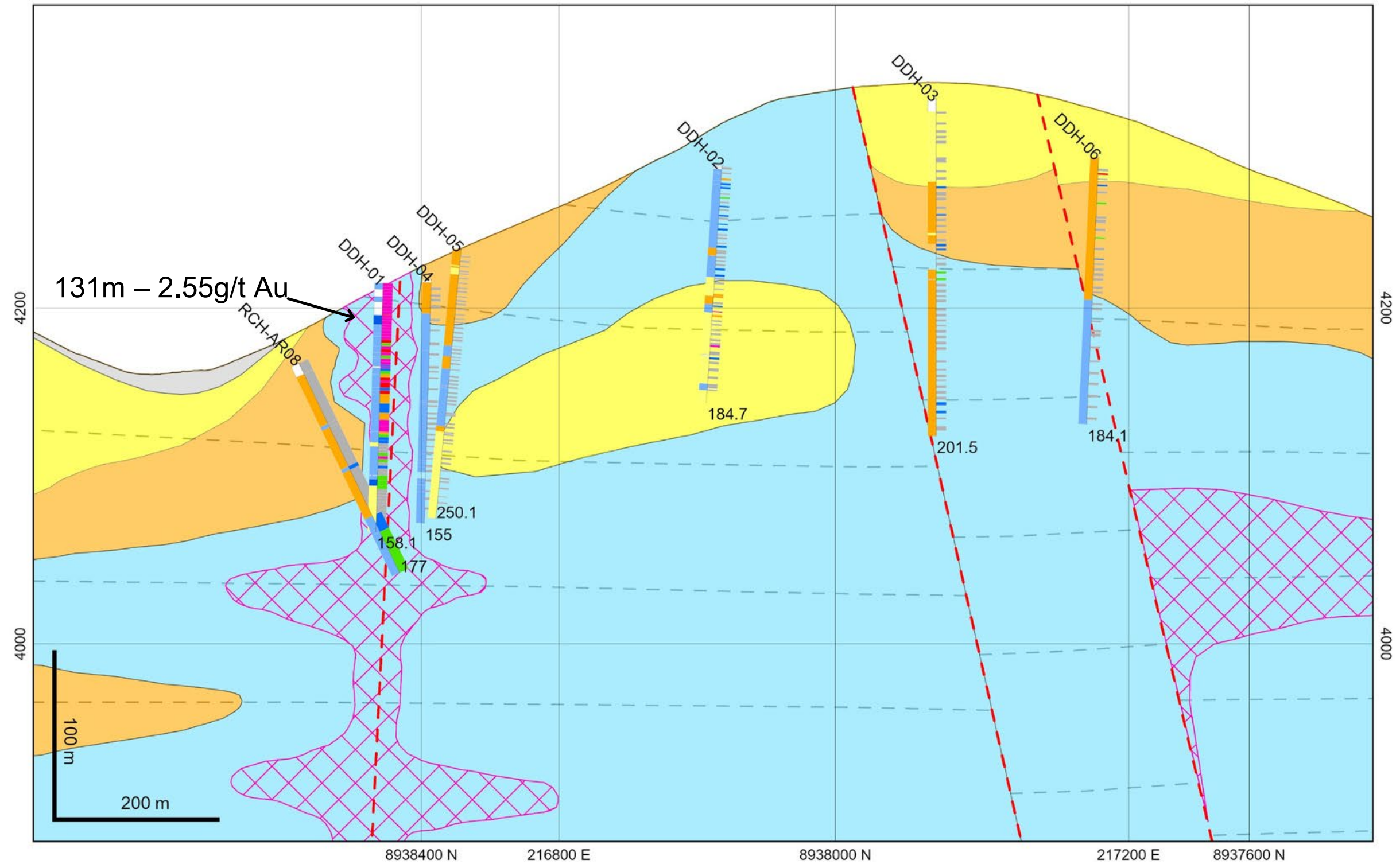
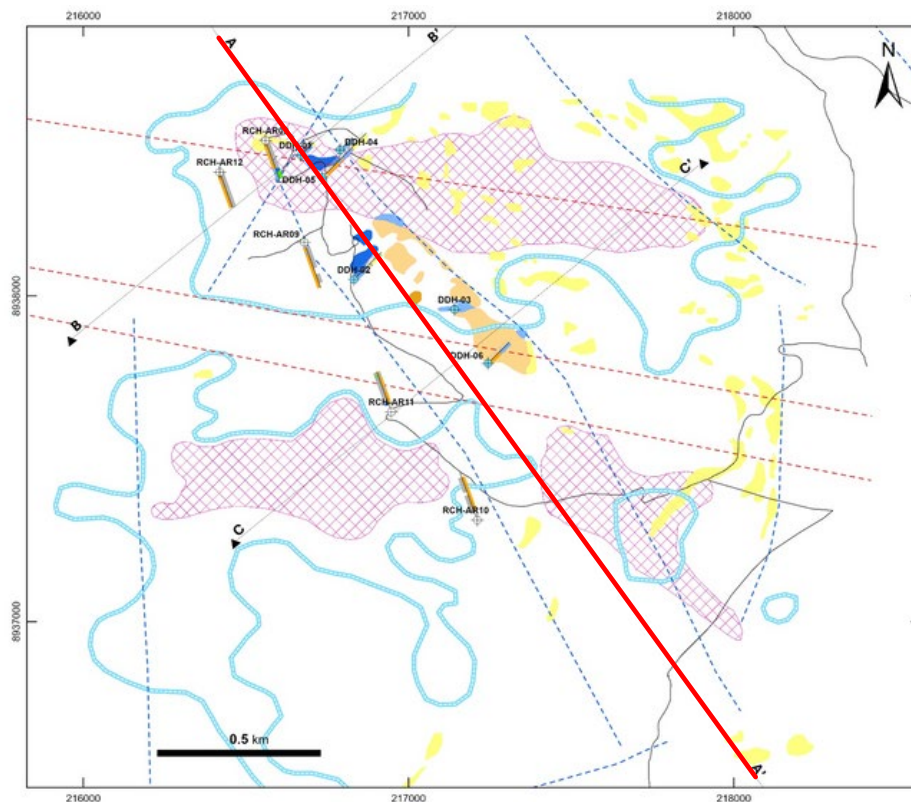
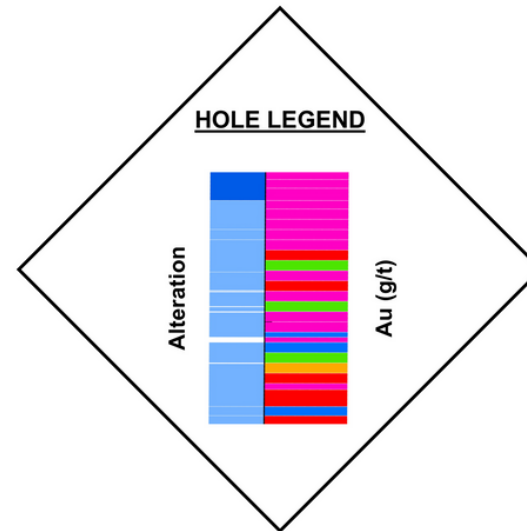
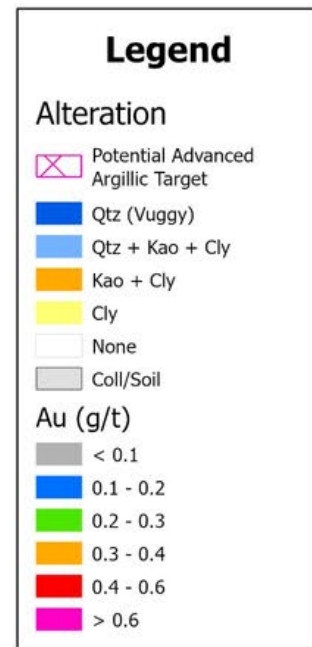
Legend

- Advanced Argillic Mineralized Target
- Vuggy Silica
- Massive Silica
- Quartz-Alunite-Kaolinite
- Quartz-Kaolinite-(Sericite?)
- Argillic
- CSAMT Resistivity Outline Zone (-100m)
- CSAMT Resistivity Outline Zone (-200m)
- CSAMT Resistivity Outline Zone (-300m)
- 1996 BV DDH
- 1996 BV RC
- Interpreted Structure
- Structure
- Section Point
- Section Line
- Unpaved Road



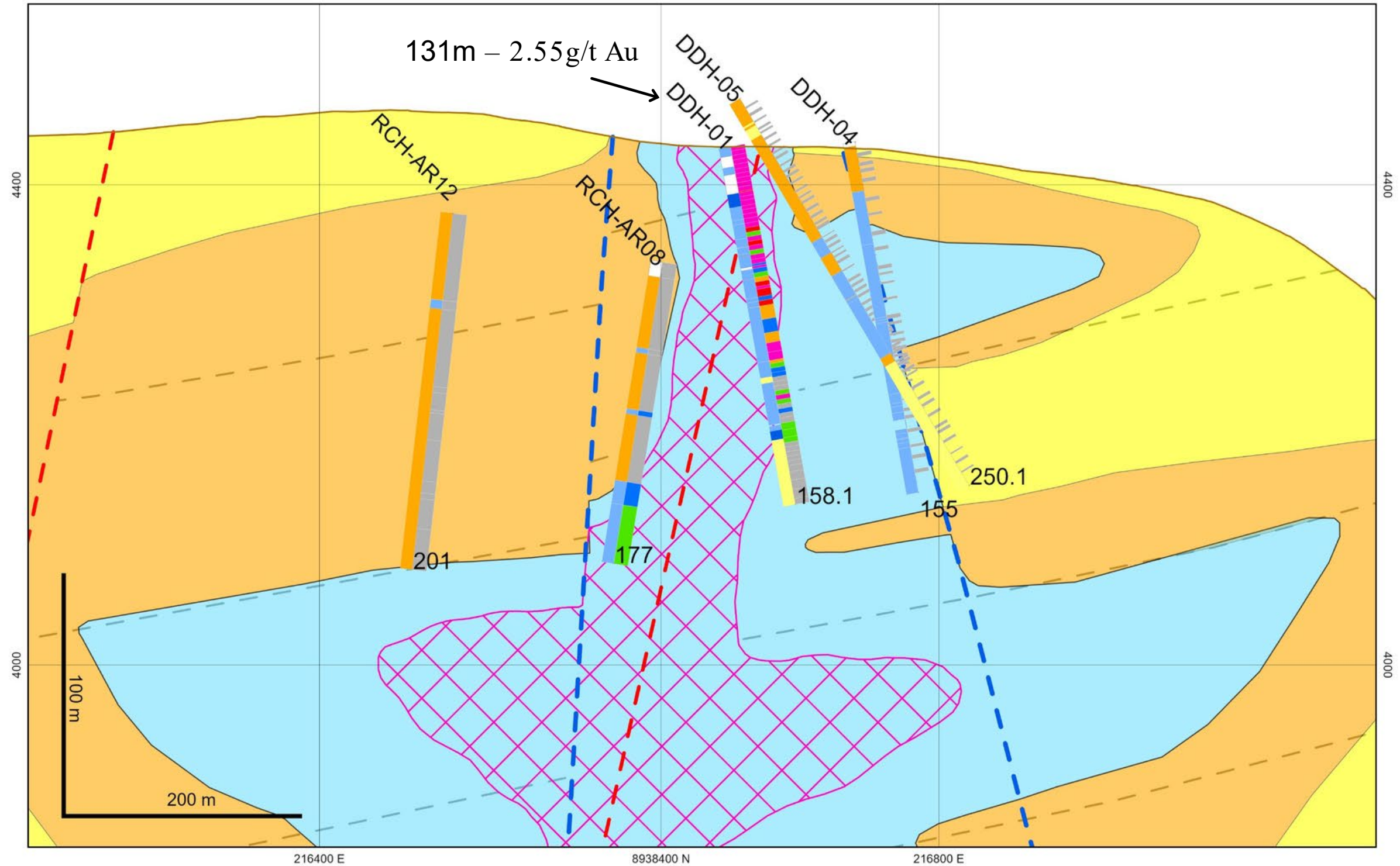
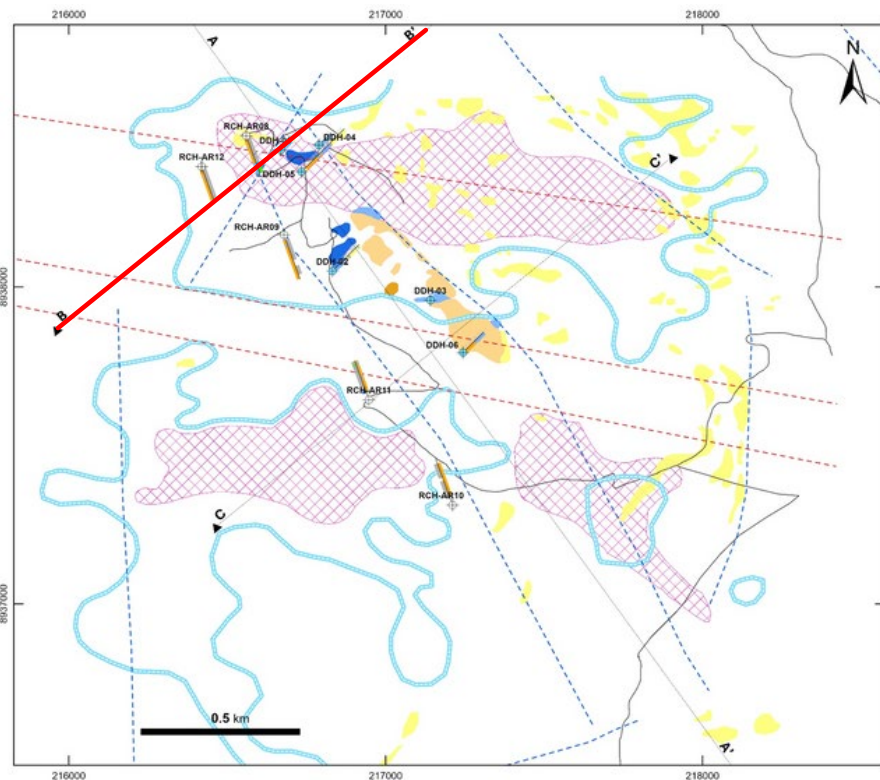
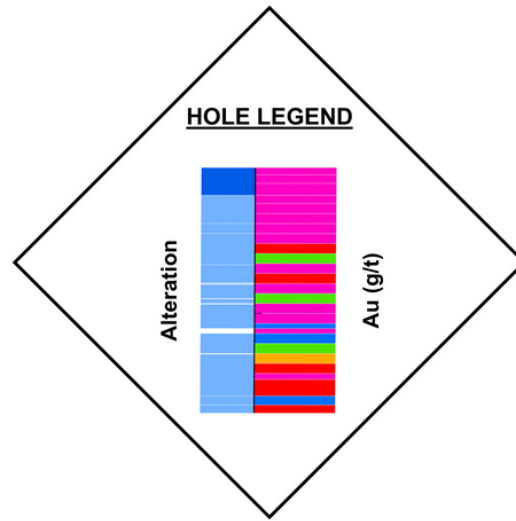
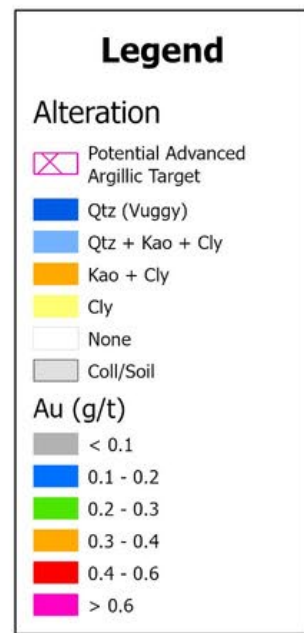
Alto Ruri

Section A – A' (Looking NE)



Alto Ruri

Section B – B' (Looking NW) Zoom In



Alto Ruri - Epithermal High Sulphidation Au Project Cerro Quillo - Porphyry Au-Cu-Mo Projects

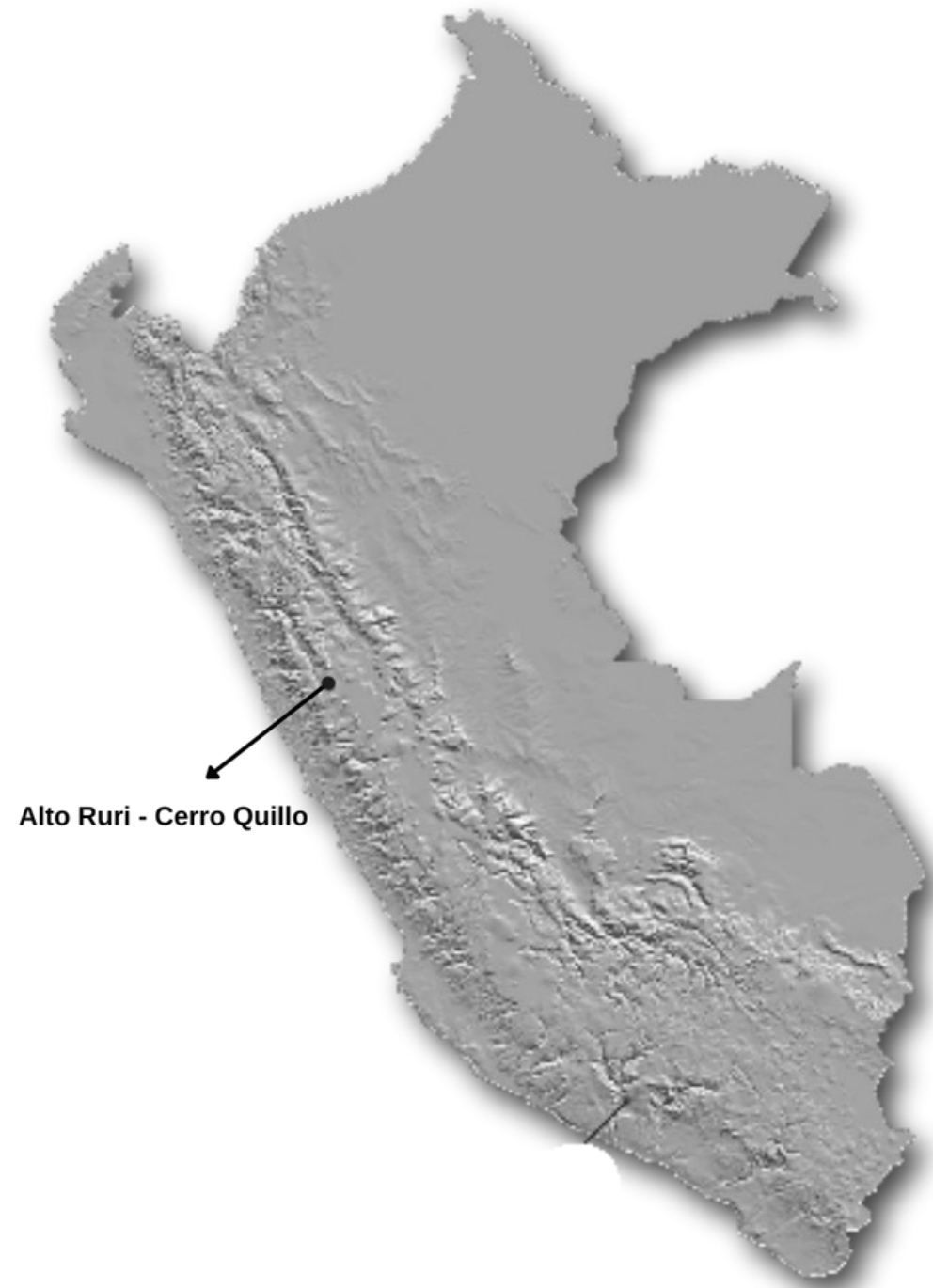


Panoramic view of the Alto Ruri Project looking North

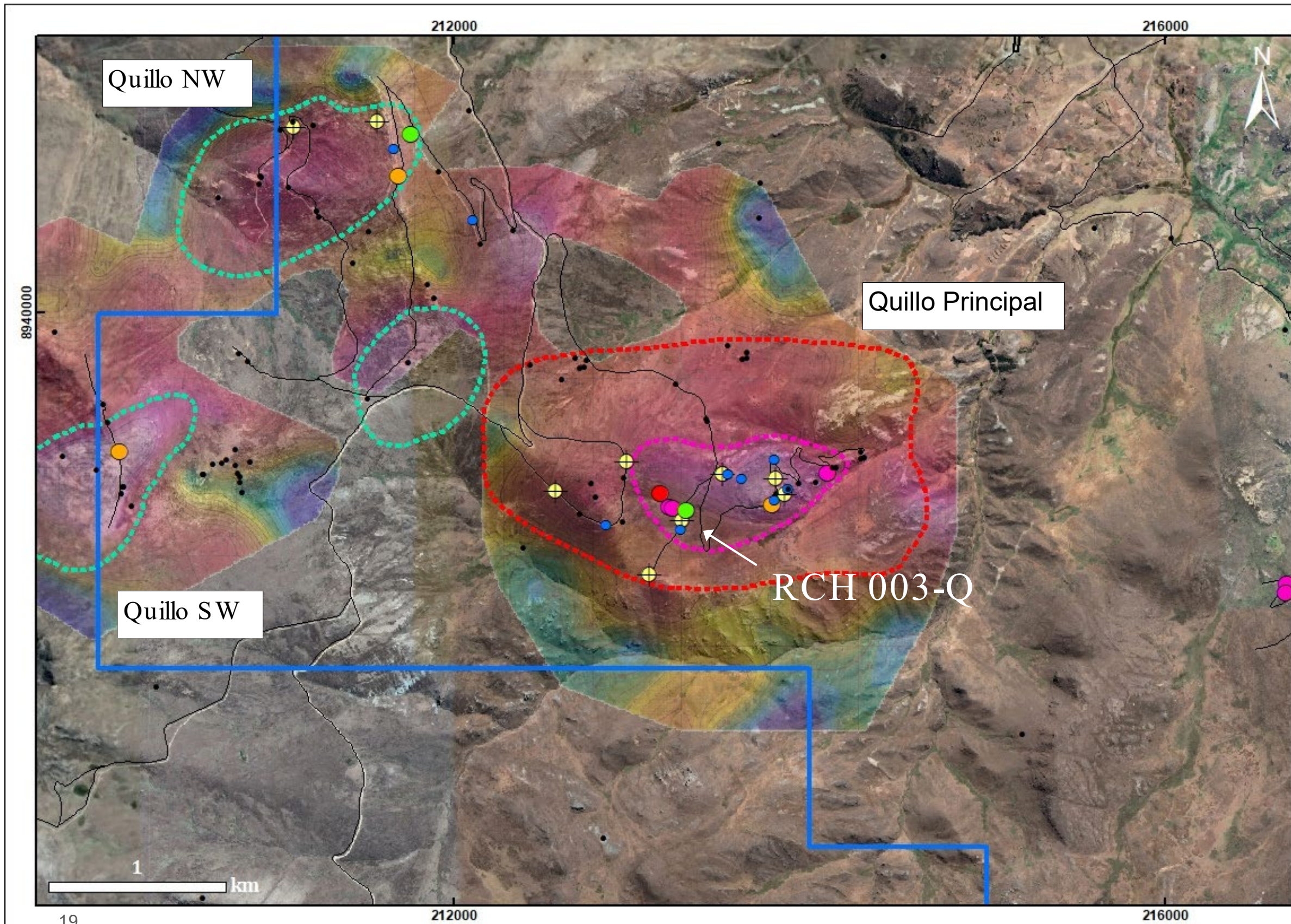


Cerro Quillo Project

Porphyry Au-Cu-Mo



Cerro Quillo Regional IP Chargeability (200m)- Au Geochemistry



Drilled by Anglo American 2004

- 9 holes for a total of 2684.9 m.
- 003-Q returned best results of 200 m of 0.49 g/t Au, 0.09% Cu, 0.007% Mo.

Legend

Au Rock (ppb)

- -5 - 50
- 51 - 100
- 101 - 200
- 201 - 300
- 301 - 500
- 501 - 3190

Alto Ruri-C°Quillo Concessions Outline

C. Quillo Porphyry Au-Cu-Mo Target

Cerro Quillo Target

Cerro Quillo Prospect

Quillo Hole

2004 AA DDH

Towns

Paved Road

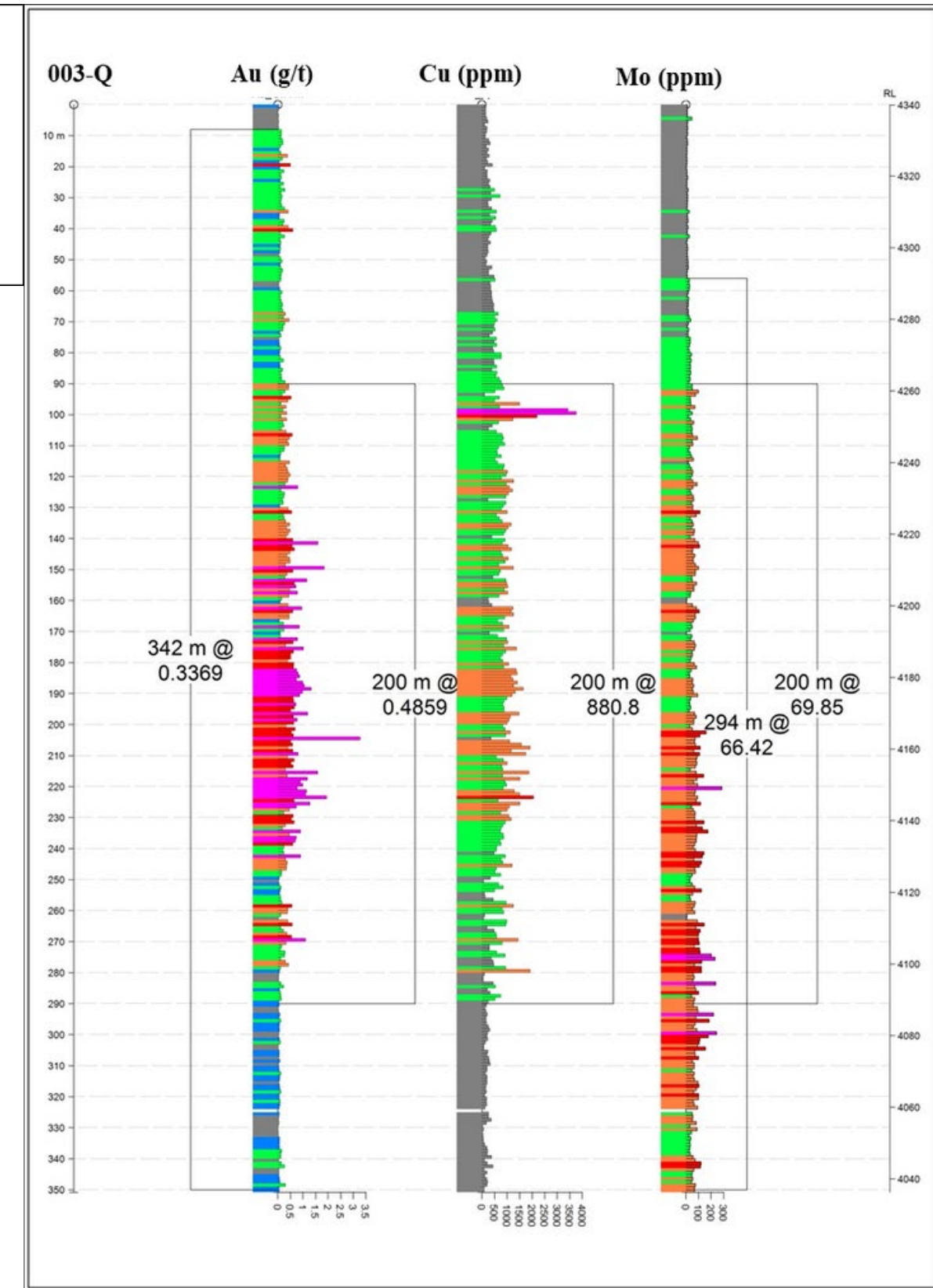
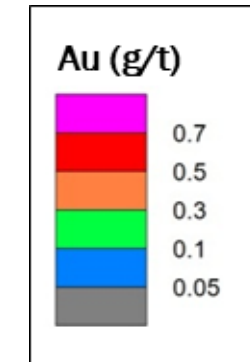
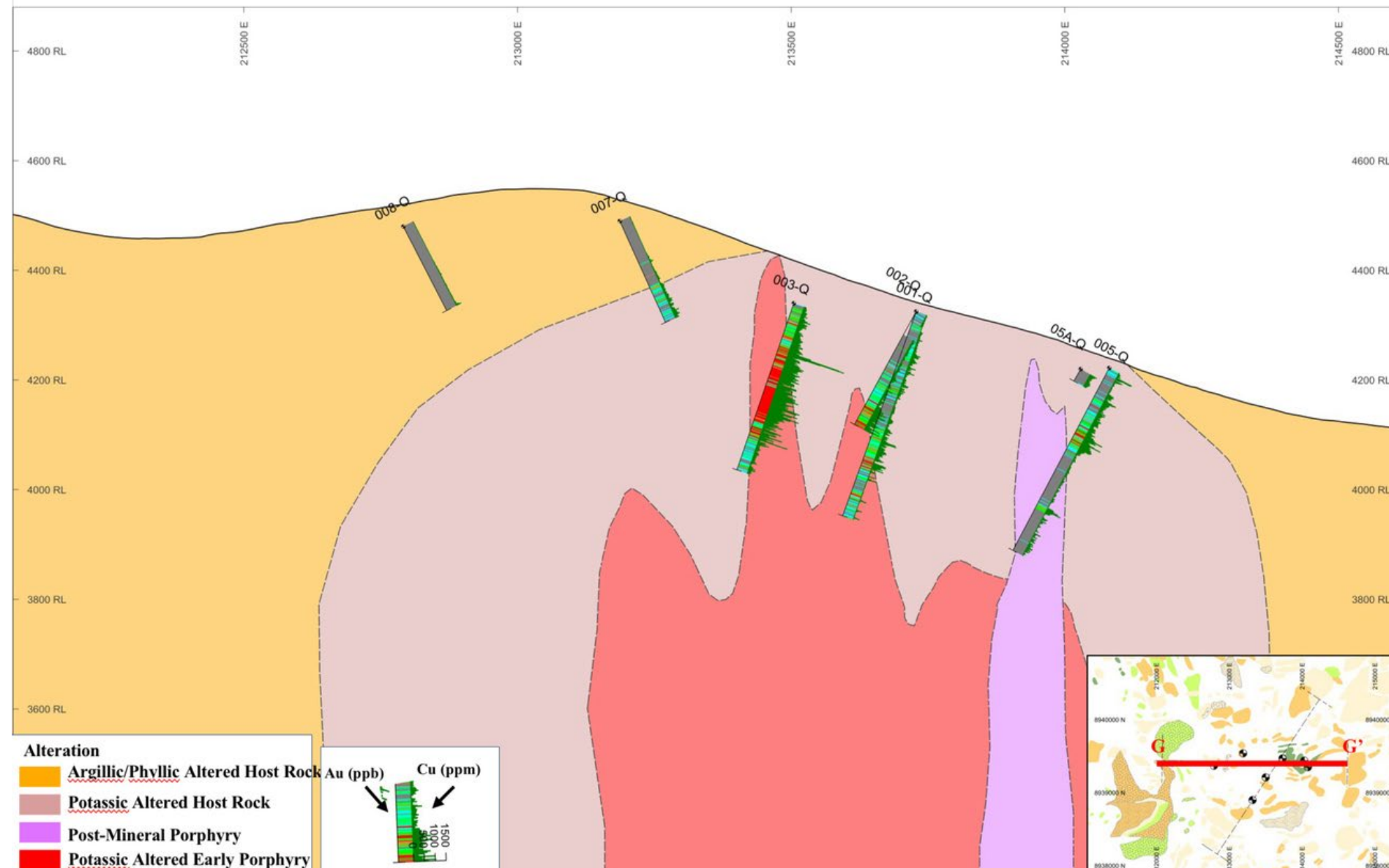
Unpaved Road



Cerro Quillo Porphyry Au-Cu-Mo Project

Strip Log RCH 003-Q

Cerro Quillo – Geological Model
Section G-G'. Looking N

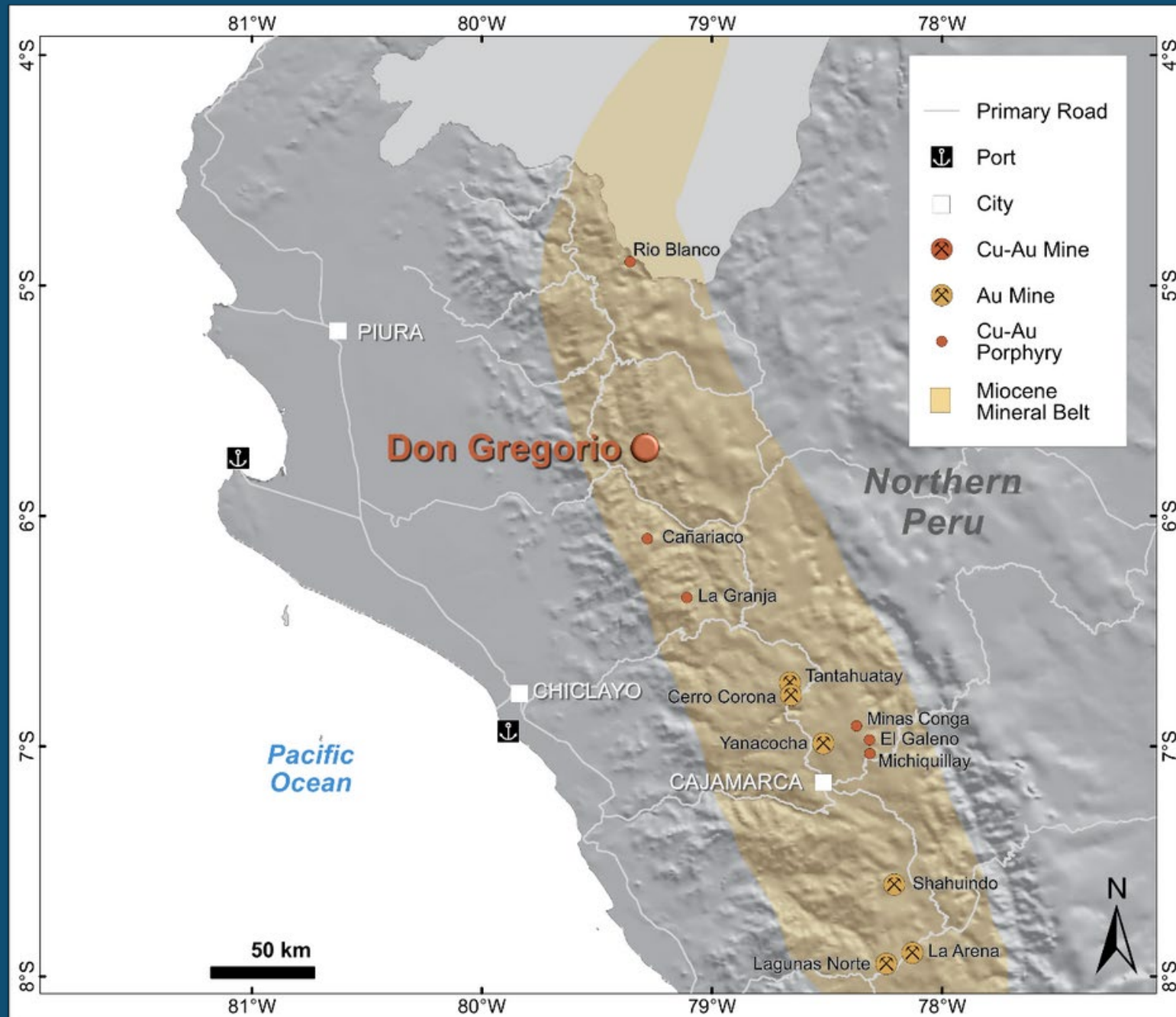


Don Gregorio

Porphyry Cu-Au



Summary

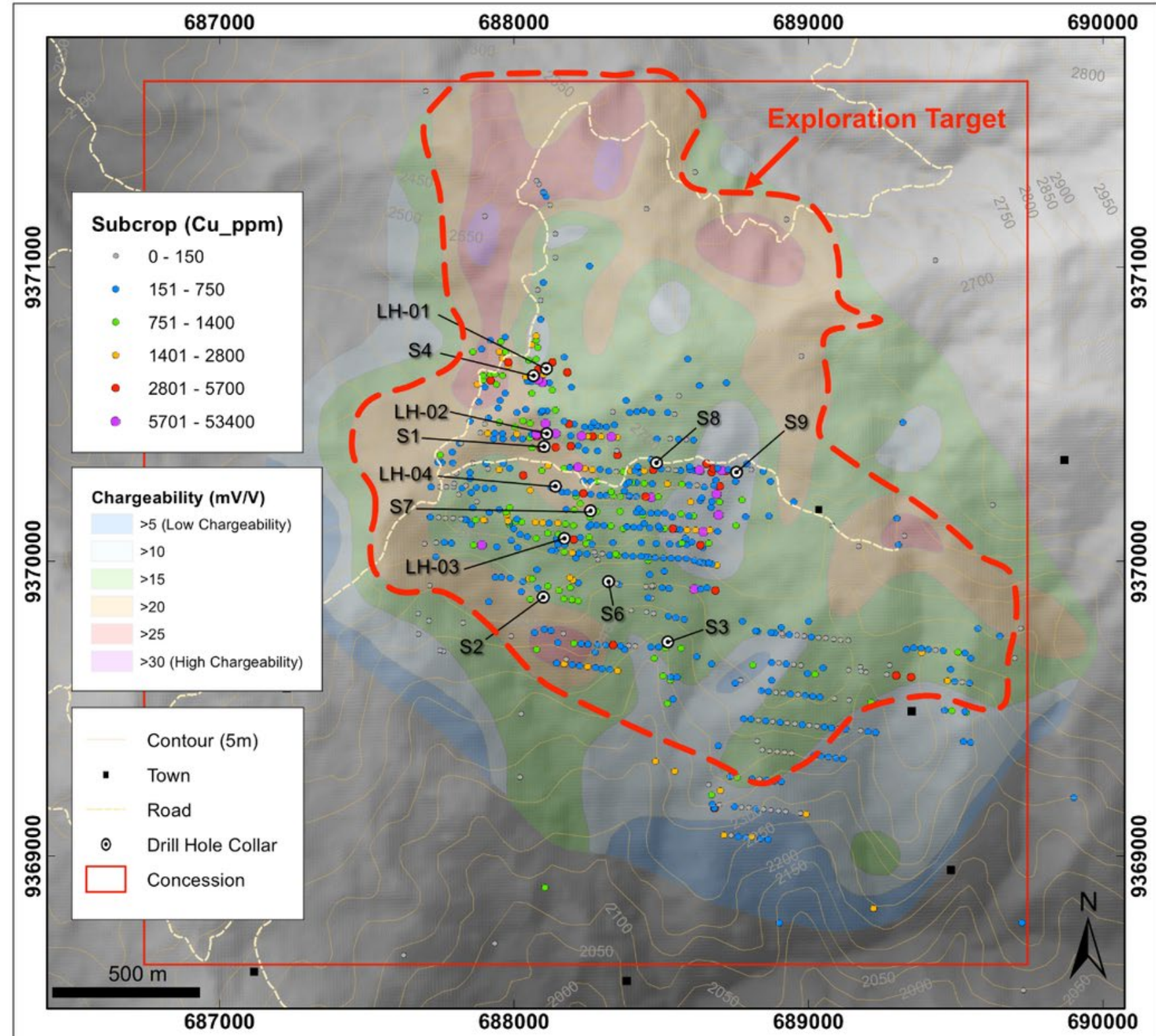


- 900 ha property under option by Forte Copper from Candente Copper Corp (now Alta Copper Corp).
- Forte Copper can acquire a 60% interest in Don Gregorio by:
 - Cash payments of US\$500,000 over 3 years.
- Total of 10,000 m diamond drilling over 3 years upon receipt of drill permits.



Exploration Target

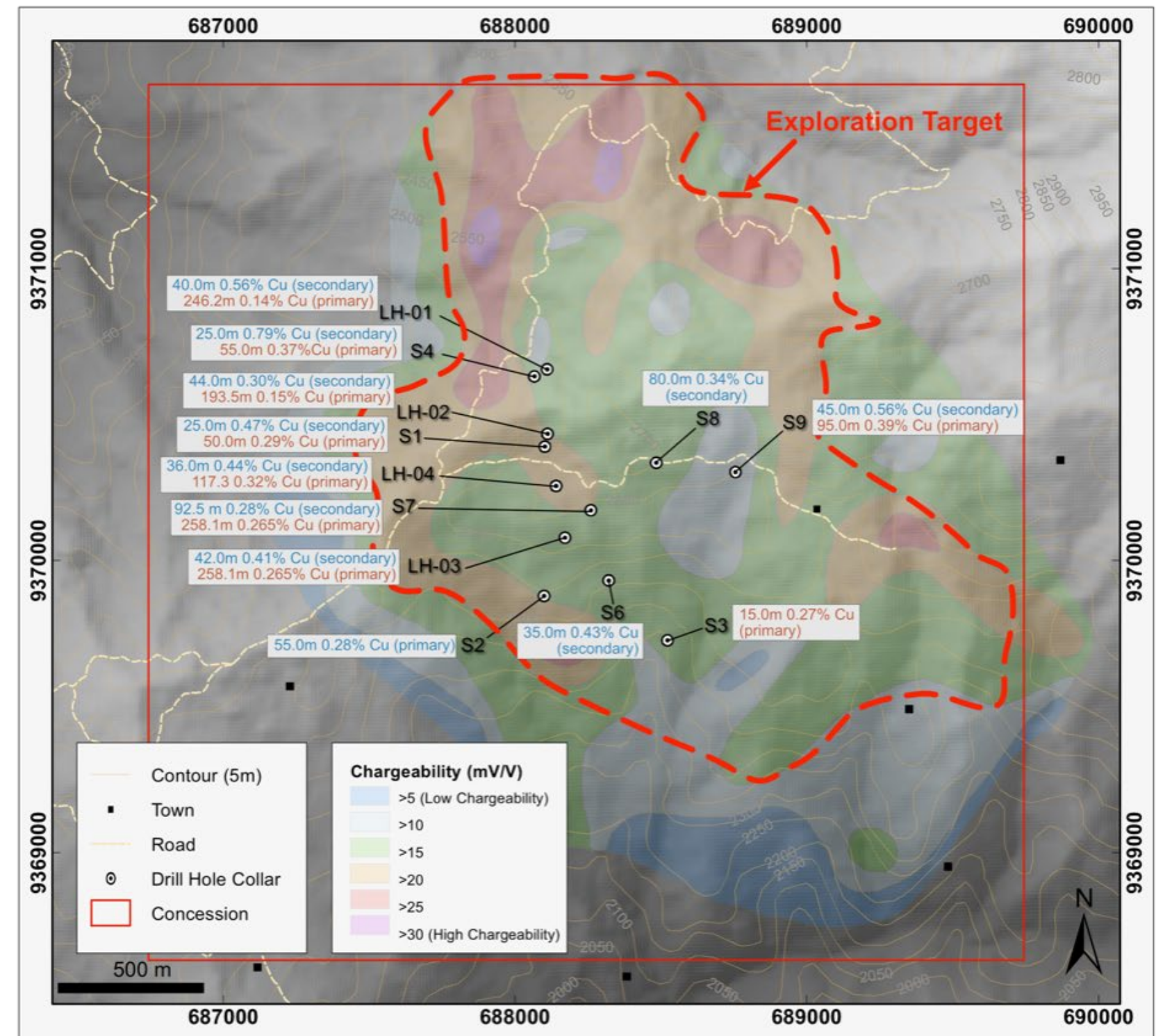
- 2.6 x 1.7 km porphyry Cu-Au exploration target outlined from geochemistry, geophysics, and drilling.
- Hole S9 (eastern-most drill hole):
 - 45m of 0.56%Cu (Secondary)
 - 55m of 0.39%Cu (Primary)
- EOH 100m - Open to the east and depth.
- Historical drilling focused on one section corridor.
- Limit of phyllic alteration is interpreted to coincide with strong chargeability (>20 mV/V).
- Enrichment and leach cap are partially removed by erosion.
- Geochemical response controlled by erosion and post-mineral cover characteristics.
- Strong geochemistry not necessarily above porphyry centre.
- Potential for stronger enrichment zones exists on the northern side of the target.



Historic Drilling Highlights

Porphyry Cu-Au

- Exploration potential remains open at depth and in all directions.
- All holes encountered Copper and Gold mineralization (when analysed).
- S8 & S9 encountered significantly high grades of secondary and primary copper mineralization.
- The region to the east and north remains highly prospective and be a focus of the upcoming drilling campaign.
- Drilling target area delineated with -----

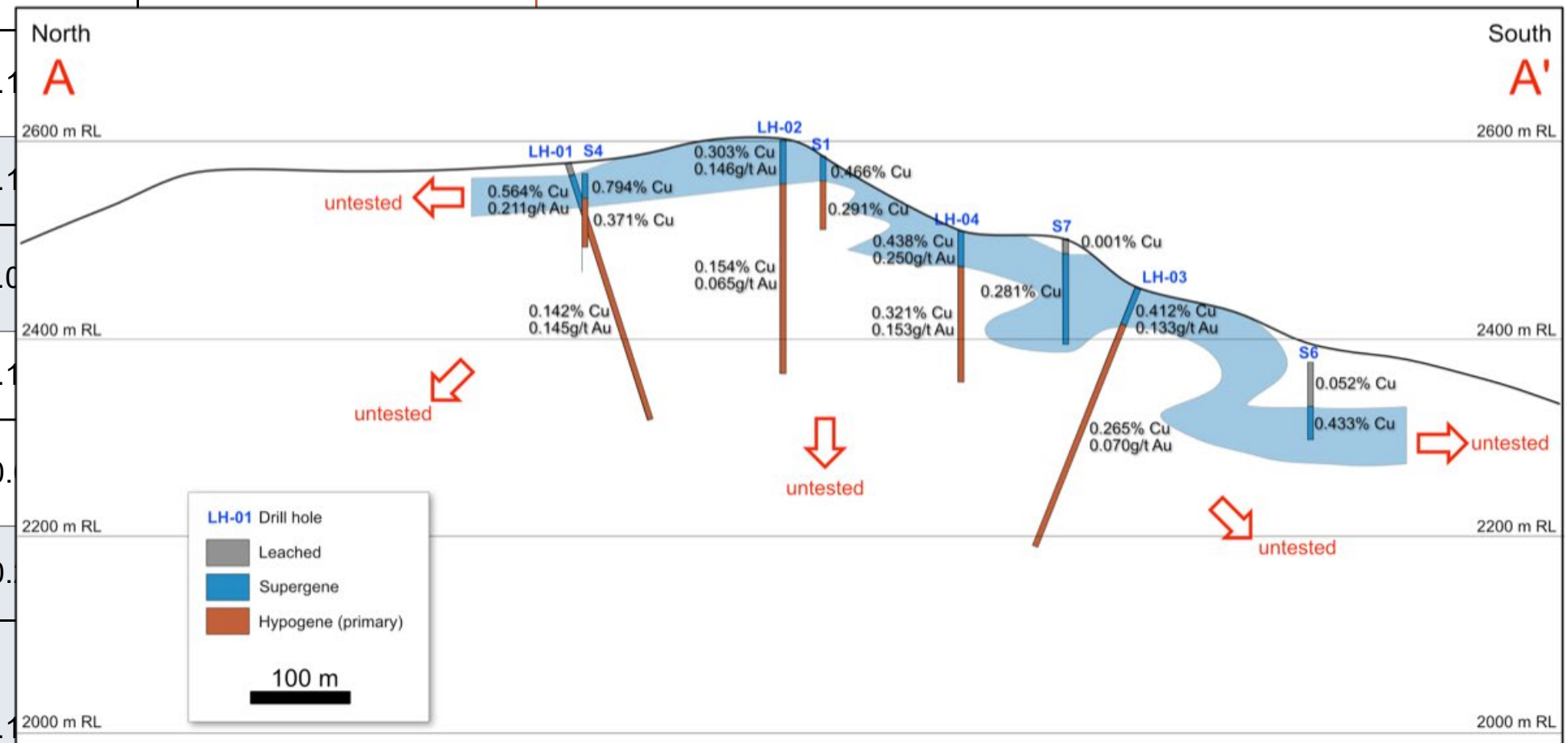


Historical Drilling

- Drilling was focused on one section corridor.
- Exploration potential is open to the north and south on the section.

enrichment profile removed by erosion.

Hole	From	To	Cu %	Au g/t	Zone
LH-01	0	14			Leached
	14	54	0.564	0.211	Secondary
	54	300.2	0.142	0.145	
LH-02	0	44	0.303	0.146	
	44	237.5	0.154	0.065	
LH-03	0	42	0.412	0.133	
	42	300.1	0.265	0.070	
LH-04	0	36	0.438	0.250	
	36	153.3	0.321	0.153	
S1	0	25	0.466	0.146	Secondary





Analysis and Recommendations

Don Gregorio Porphyry Cu-Au

Future drilling needs to be upslope and above the blanket in order to determine the full thickness and size of the blanket, which currently grades 0.4-0.6% Copper and 0.15g/t Gold; Primary copper grades are in the 0.3-0.35%+ Cu.

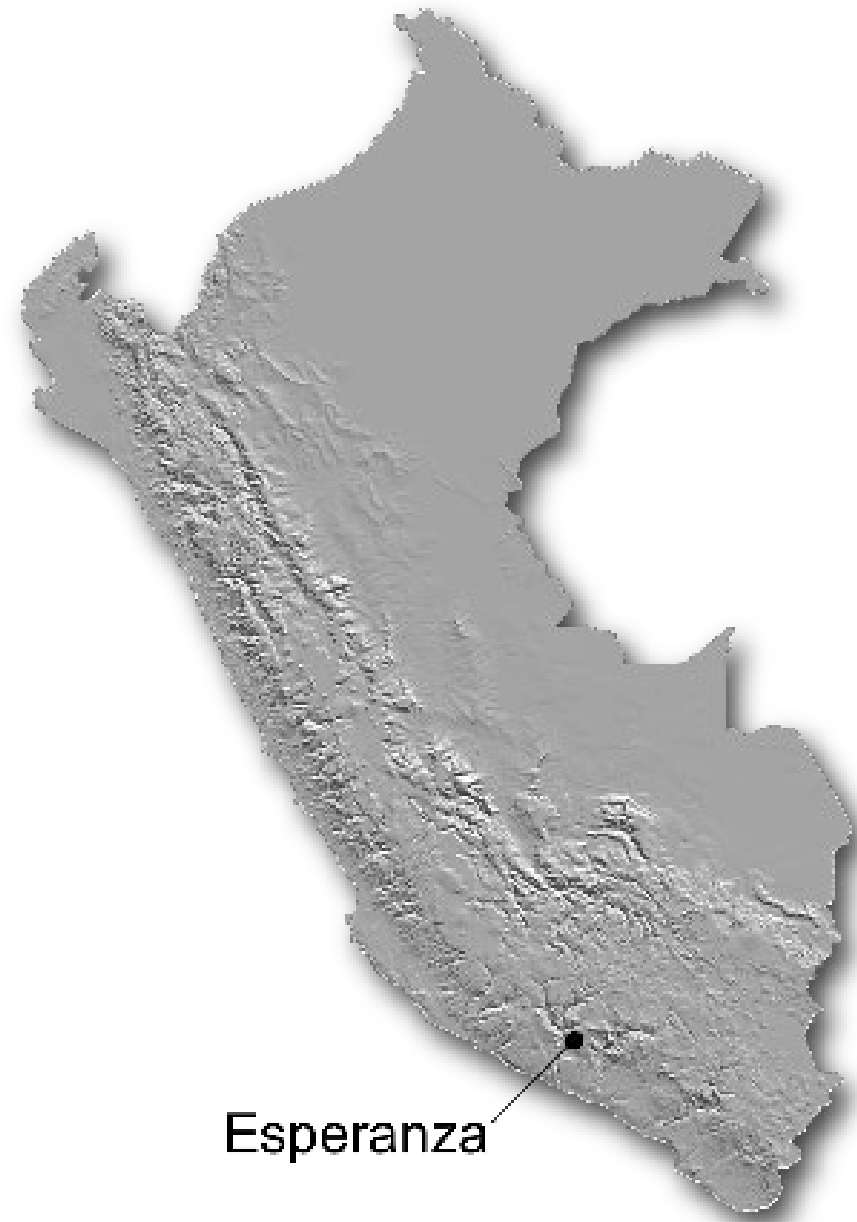
The better grade, potassically altered rocks have not been penetrated by historical drilling. Total tonnage target ranges from 250-500 million tonnes of 0.3-0.5% Cu.

Forte ranks this investment in the same class as Constancia and Zafranal except Don Gregorio contains significant gold mineralization ~ 0.15 g/t Au. Shallow historical drilling <100m ended in copper mineralization and suggest potential for a larger hypogene mineralization at depth.



Esperanza

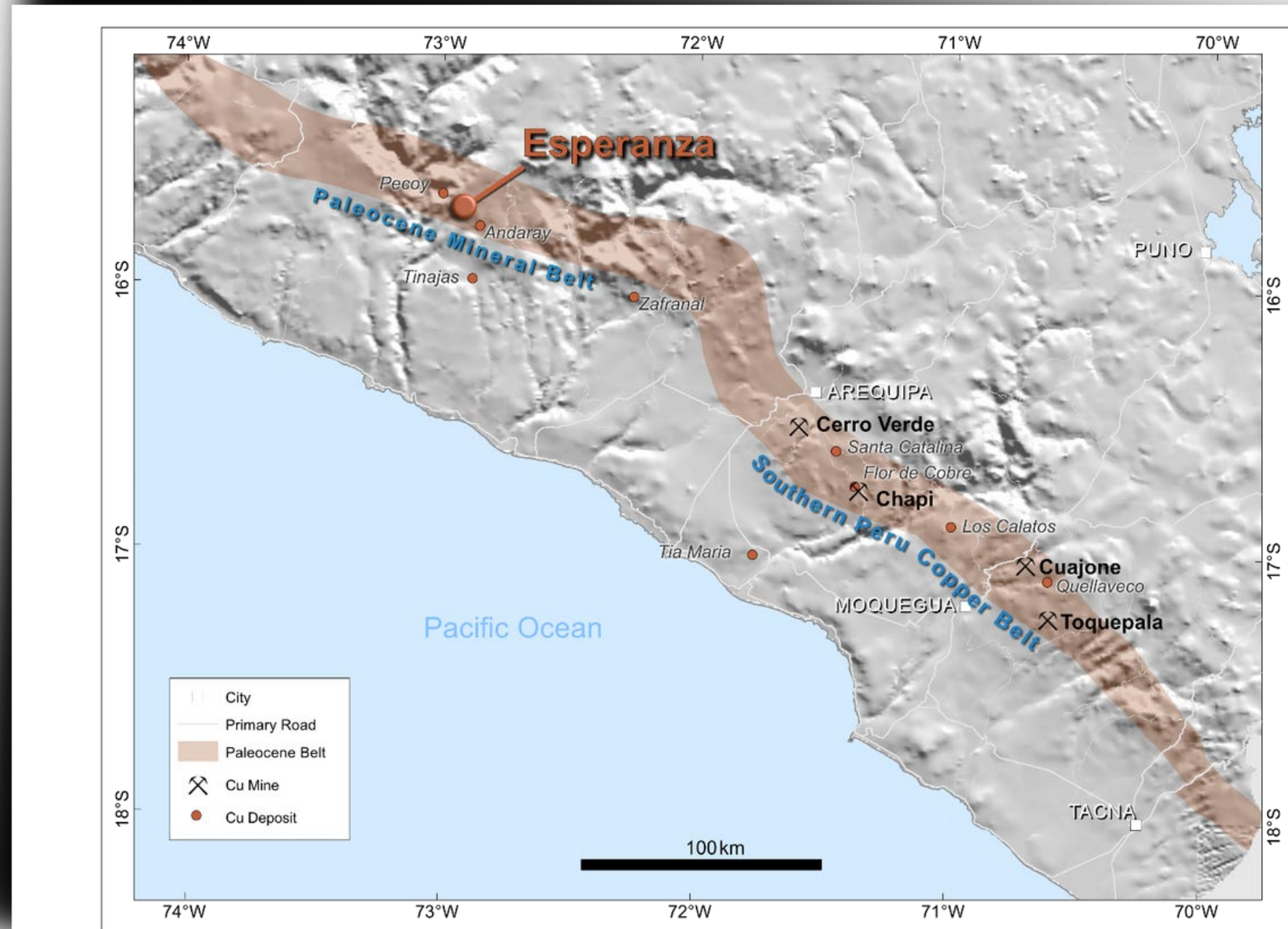
Porphyry Cu-Mo



Regional Setting

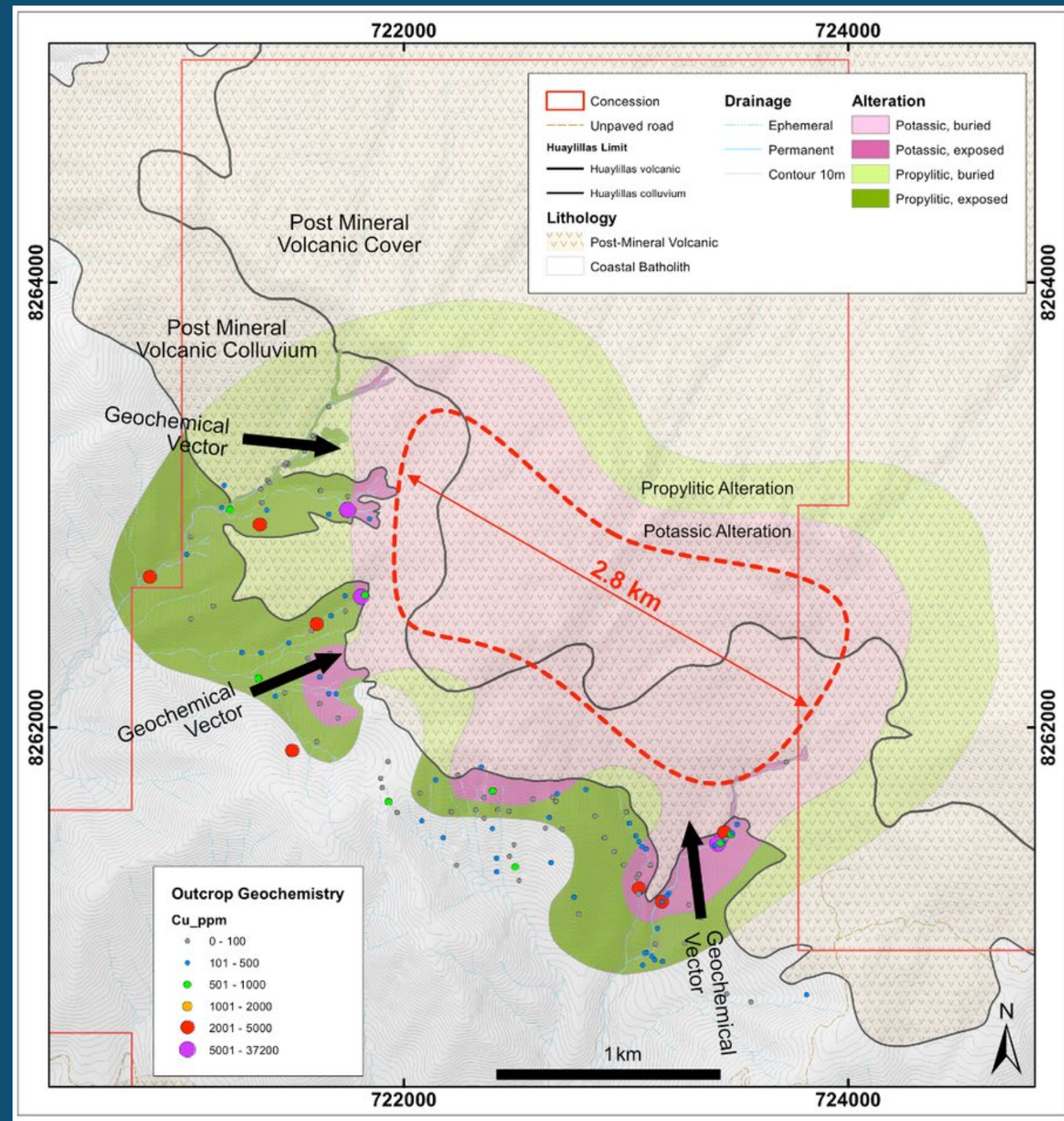
Paleocene Belt of Southern Peru

- Esperanza is located in the Paleocene belt of southern Peru.
- Existing porphyry copper mines coupled with recent discoveries from exploration make this an optimal region for copper exploration, discovery, resource development and permitting.



Summary

4,000 ha property in the Paleocene magmatic arc. 100% Forte Copper.



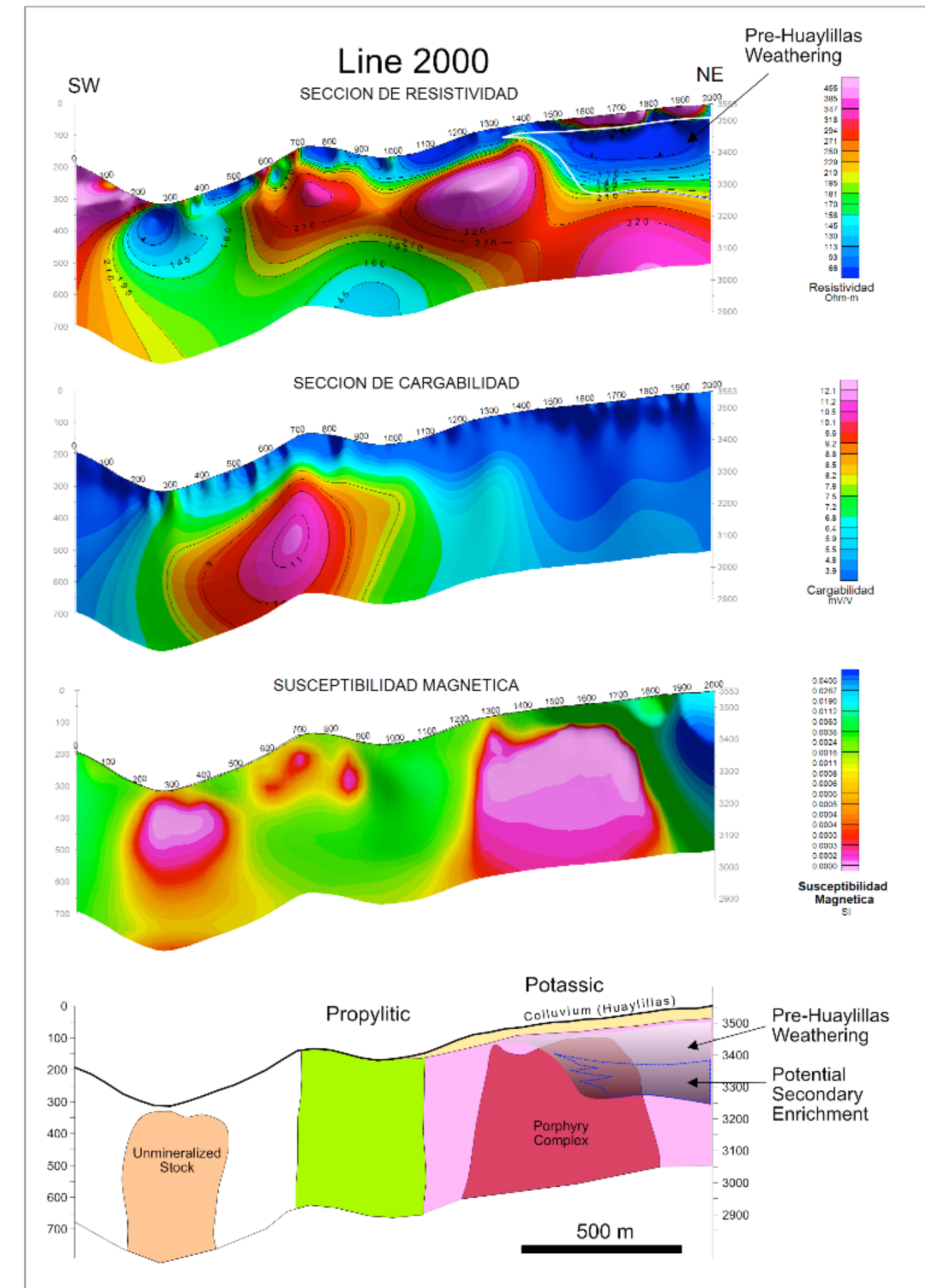
- 2.8 x 1.7 km potassic zone is inferred from geological, geochemical, and geophysical patterns.
- Prospective for supergene-enriched and hypogene (sulfide) Cu mineralization.
- Untested by drilling.
- Porphyry footprint measuring 4.2 x 3.1 km is constrained by geologic mapping.
- Supportive communities.
- DIA Received December 2023.



Exploration Target

Geophysical Section

- Geophysical response aids interpretation of under-cover target
- resistive veneer maps Huaylillas colluvium.
- Low resistivity represents deep weathering promoted by phyllic alteration.
- body with low magnetic susceptibility maps porphyry complex.
- Geological patterns (alteration, veining)
- Porphyry system is emplaced into Coastal Batholith.
- Potassic zone exposed on edge of post-mineral cover.



Target Identification

Esperanza Porphyry Cu-Mo

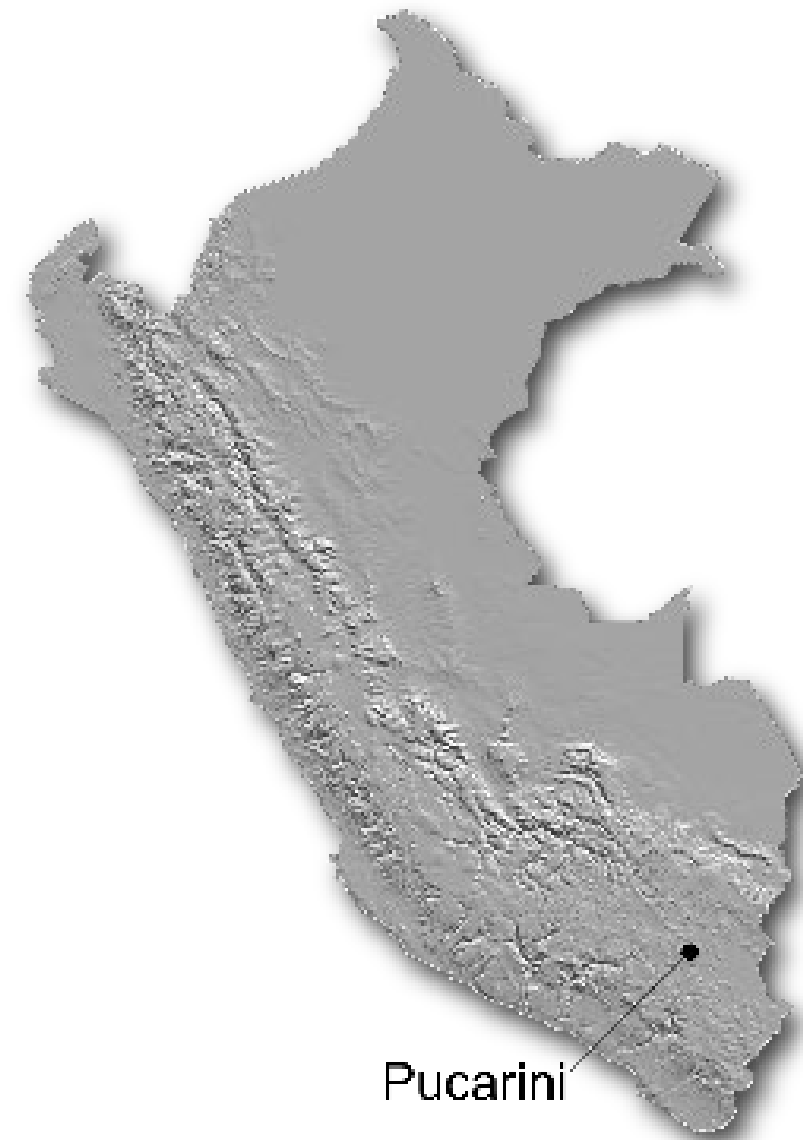


- Exposure of debris from an eroded sericite-pyrite alteration zone indicates a porphyry centre buried beneath post-mineral volcanic cover.
- Pre-depositional weathering of debris fragments indicates potential for supergene enrichment of the buried porphyry centre.



Pucarini

High Sulfidation Epithermal Au





Pucarini High Sulfidation Epithermal Au

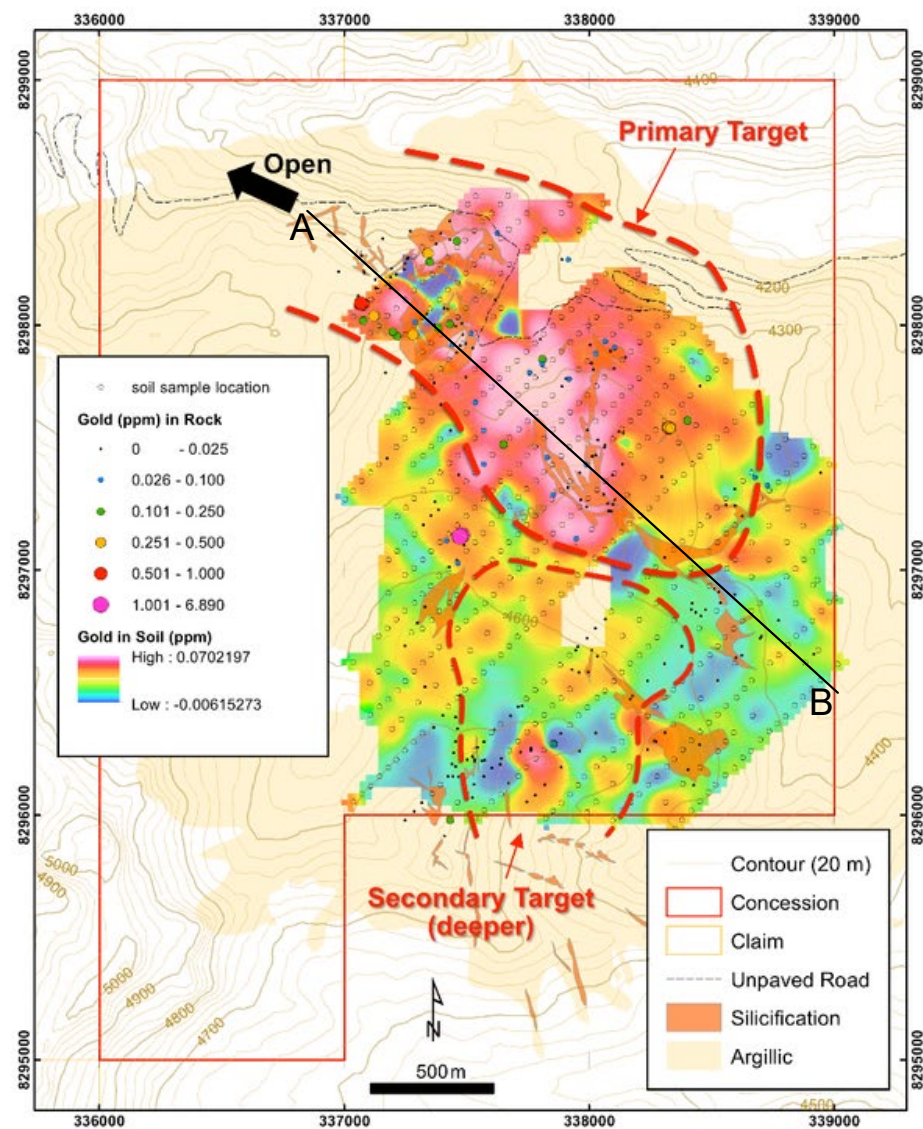
- 1,000 ha Pucarini claim and 6,100 ha regional concessions 100% Forte Copper.
- Multiple, gold-bearing advanced argillic alteration zones within a 3.6 x 1.8 km argillic alteration footprint.
- Anomalous Au geochemistry coincides with resistivity and chargeability anomalies.
- Targets are untested by drilling.
- NI 43-101 Technical Report Feb 2021.
- Communities are amenable to project advancement.
- DIA approval September 2023.

Summary

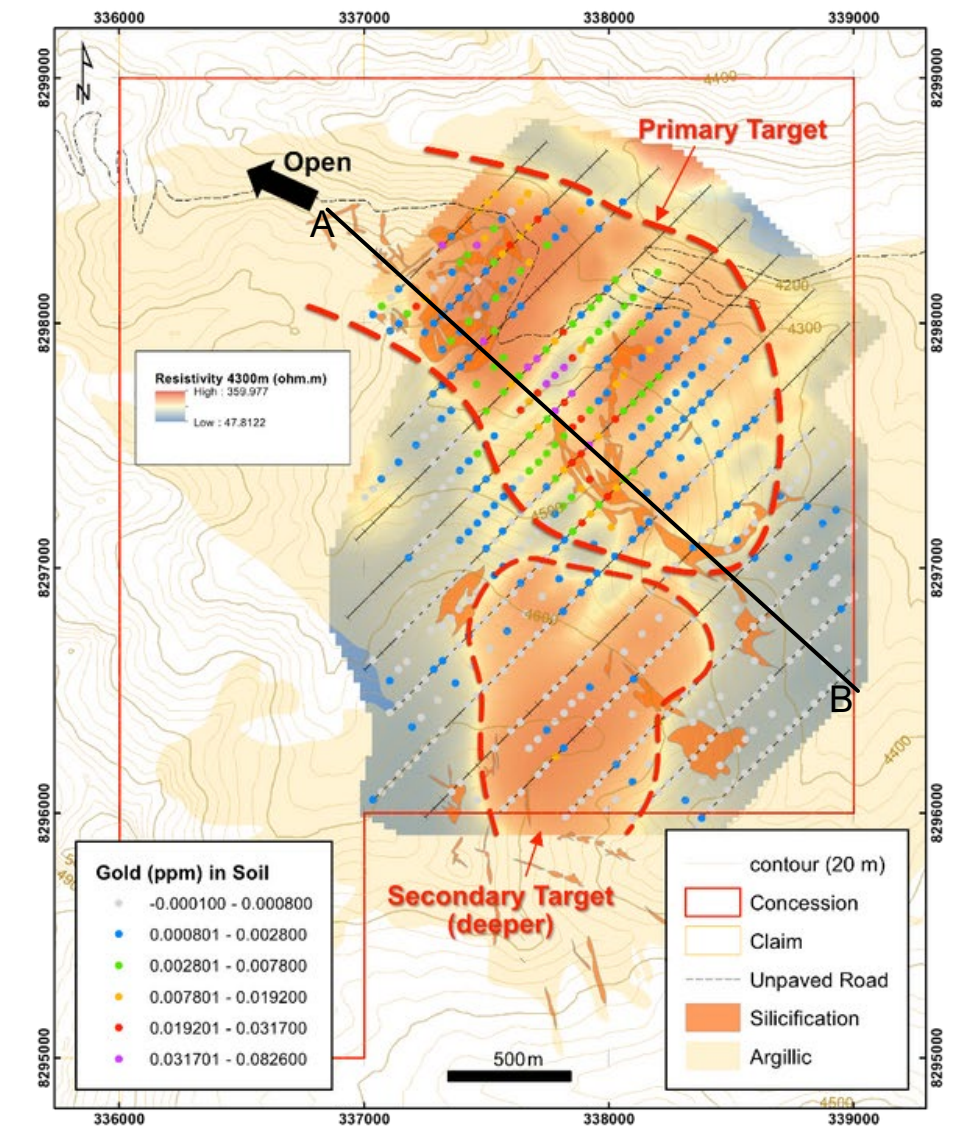
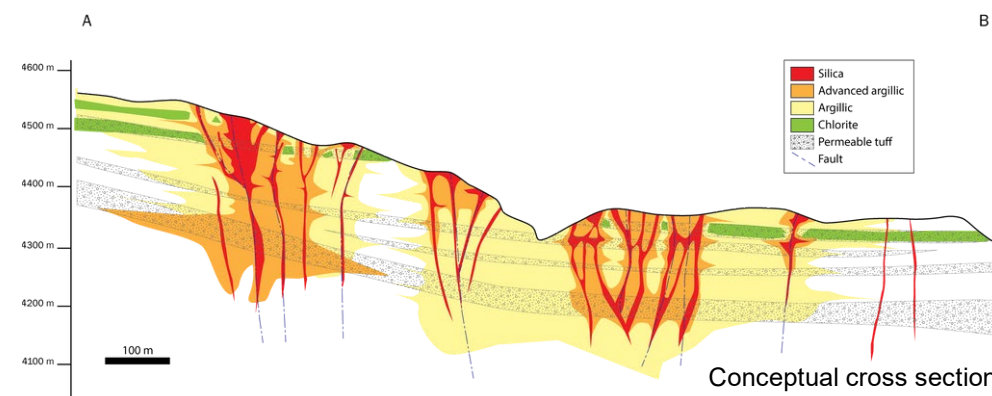


Exploration Target - Geochemistry/Geophysics

Pucarini High Sulfidation Epithermal Au



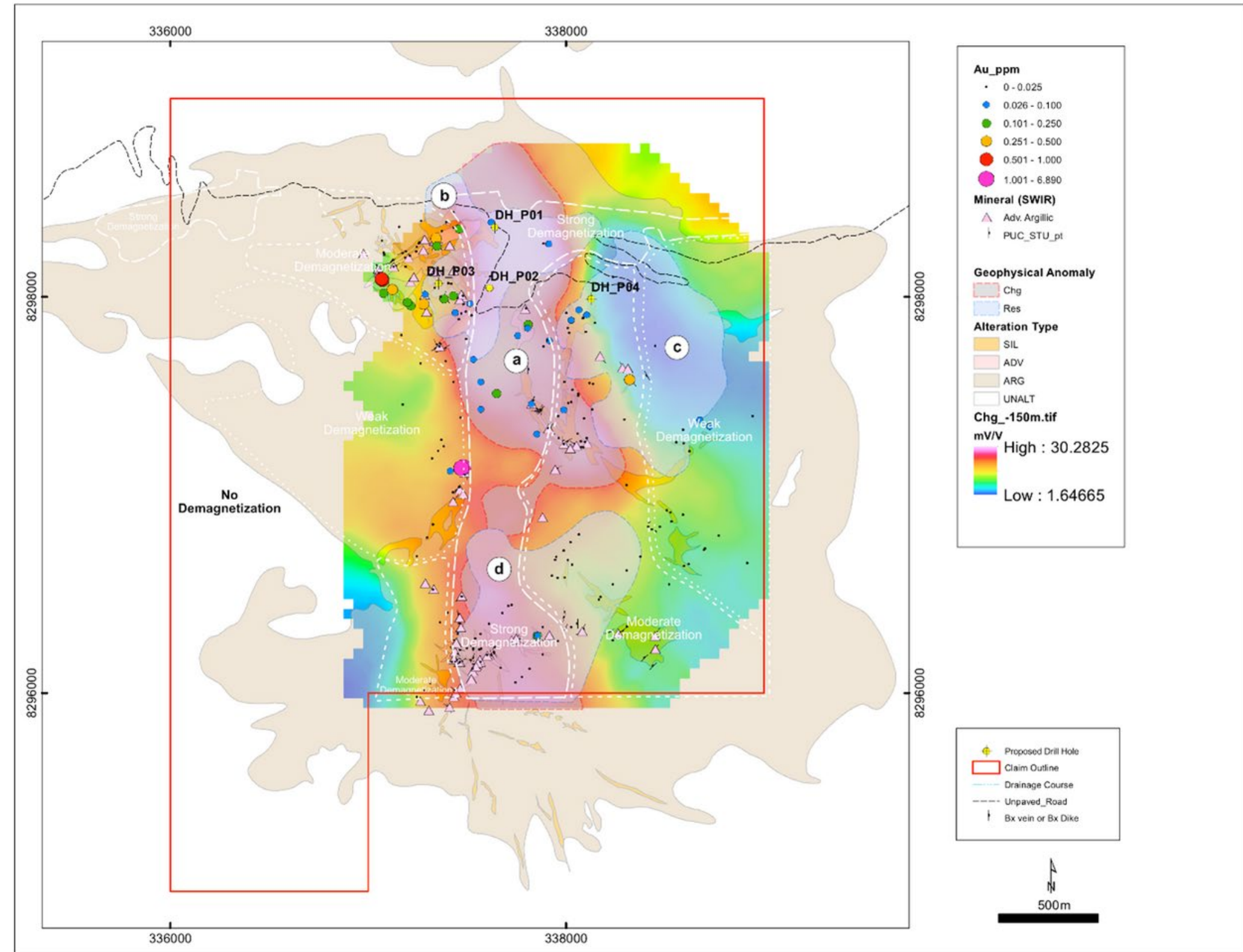
- Exploration targets identified based on integration of rock and soil geochemistry, chargeability, resistivity, and geology.
- Outcrop sampling demonstrates advanced argillic-altered structures are gold-bearing.
- Resistivity anomaly suggests more intense and coherent silicic alteration at depth.



Pucarini IP, Geochemistry and Drill Targeting

A compilation of key high sulphidation epithermal Au targets and proposed diamond drill locations.

2024 Initial Phase 1 Proposed Drill Program of 4 holes (1200m)





FORTE
MINERALS CORP.

CSE: CUAU | OTCQB: FOMNF | Frankfurt: 20A

Contact Information

1005-409 West Granville St.
Vancouver BC V6C 1T2
T: (604) 983-8847
E: info@forteminerals.com
W: forteminerals.com

Legal Counsel
Armstrong Simpson

Auditors
Smythe LLP

Transfer Agent
Odyssey Trust Co.



www.forteminerals.com

